

Replacement Pressure Control Kit for GM3500 and GM5000 LineLazer™

308978E

EN

For professional use only.

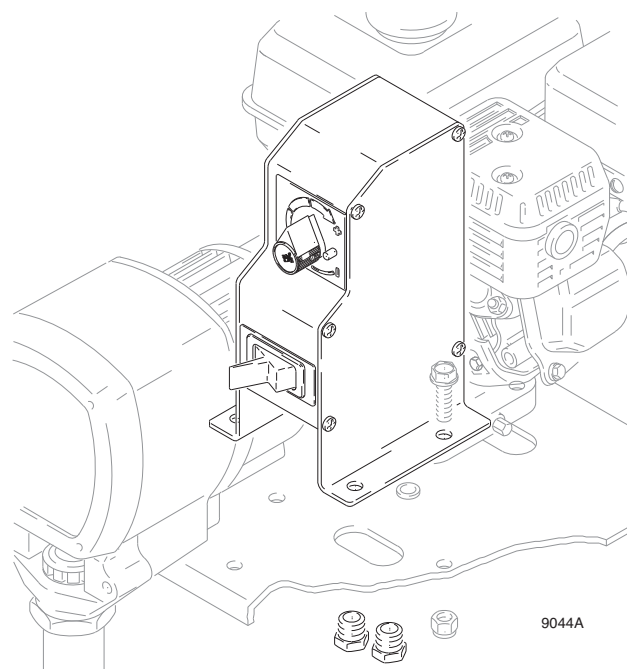
Model 240922

3000 psi (210 bar, 21.0 MPa) Maximum Working Pressure



Important Safety Instructions

Read all warnings and instructions in the operations manual.



9044A

Warnings



WARNING

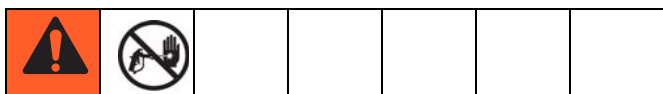


SKIN INJECTION HAZARD

High-pressure fluid from gun, hose leaks, or ruptured components will pierce skin. This may look like just a cut, but it is a serious injury that can result in amputation. **Get immediate surgical treatment.**

- Do not spray without tip guard and trigger guard installed.
- Engage trigger lock when not spraying.
- Do not point gun at anyone or at any part of the body.
- Do not put your hand over the spray tip.
- Do not stop or deflect leaks with your hand, body, glove, or rag.
- Follow the **Pressure Relief Procedure** when you stop spraying and before cleaning, checking, or servicing equipment.
- Tighten all fluid connections before operating the equipment.
- Check hoses and couplings daily. Replace worn or damaged parts immediately.

Installation



Pressure Relief Procedure

This equipment stays pressurized until pressure is manually relieved. To help prevent serious injury from pressurized fluid, such as skin injection, splashing fluid and moving parts, follow the Pressure Relief Procedure when you stop spraying and before cleaning, checking, or servicing the equipment.

1. Engage gun safety latch.
2. Turn engine ON/OFF switch to OFF.
3. Turn pressure control switch OFF.
4. Disengage gun safety latch. Hold metal part of gun firmly to grounded metal pail. Trigger gun to relieve pressure.
5. Engage gun safety latch.
6. Open pressure drain valve. Leave pressure drain valve open until ready to spray again.
7. If you suspect that the spray tip or hose is clogged or that pressure has not been fully relieved;
 - a. VERY SLOWLY loosen the tip guard retaining nut or the hose end coupling to relieve pressure gradually
 - b. Loosen the nut or the coupling completely.
 - c. Clear the obstruction in the hose or tip.

Removing the Old Pressure Control

1. Relieve the pressure.
2. Disconnect both hoses (A) from the bottom of the existing pressure control (B). Note the original location of each hose to be sure you connect them correctly.
3. Disconnect the color-coded pressure control wires (shown at location C). Remove the four mounting bolts (D), and remove the pressure control.

NOTE: Remove and replace the pressure transducer if replacing the control board only.

Installing the New Pressure Control

1. Align the bolt holes of the new pressure control with the bolt holes on the mounting plate (E), and run the mounting bolts (D) through the bolt holes. At the bolt hole nearest the grounding symbol (G), use the long bolt and the washer and nut to attach the grounding chain (F). Tighten all four mounting nuts (H).
2. Connect the color-coded wires to the new pressure control, and connect the hoses to the union swivels (25 in the Parts diagram, page 4). The orientation of the hose connections is the same as it was on the old pressure control.

NOTE: See Parts diagram, page 4. If you have a GM3500, apply pipe sealant (27) to the male threads of the reducer fittings (26), and thread the reducer fittings into the union swivels (25) before you connect the hoses. The pipe sealant and reducer fittings are supplied with the new Pressure Control Kit.

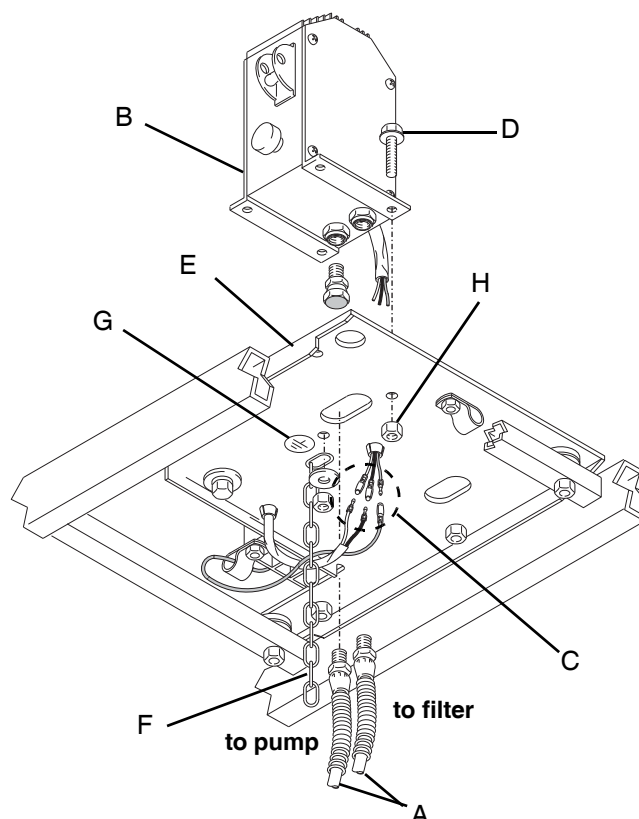
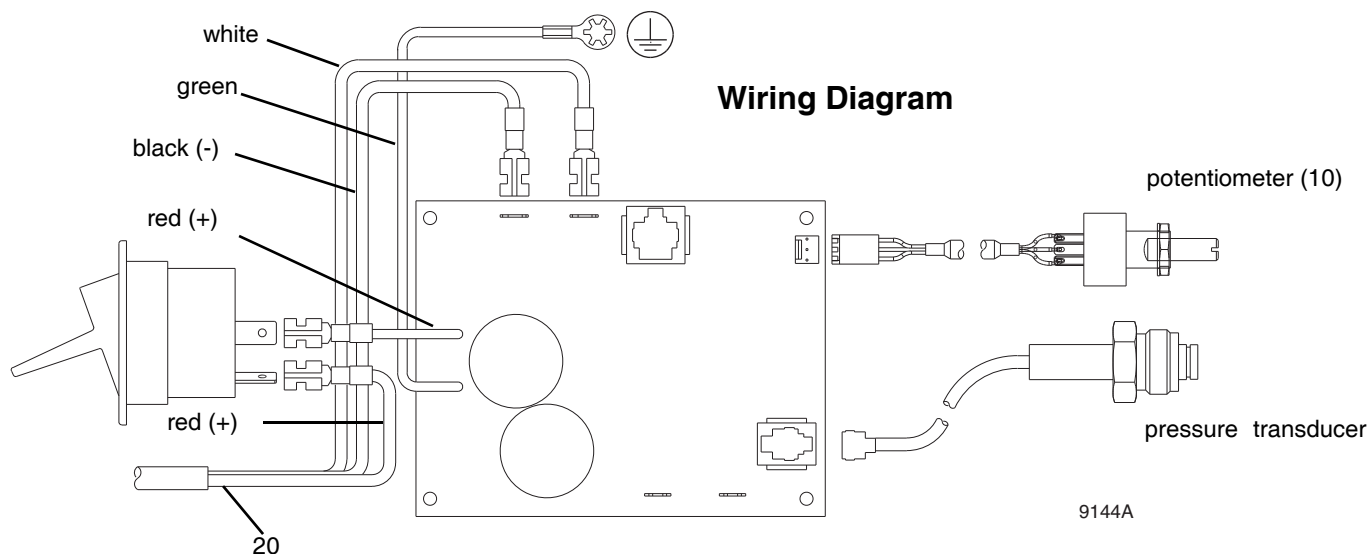


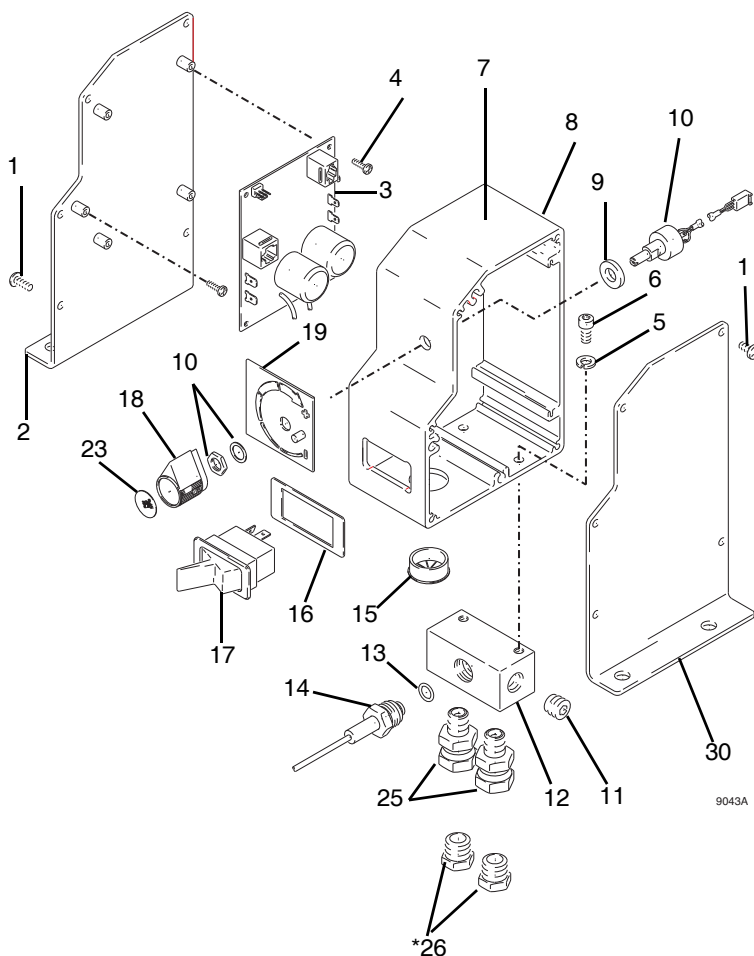
FIG. 1

Parts



Pressure Control Kit 240922

Ref No.	Part No.	Description	Qty
1	114392	SCREW, thread forming	10
2	194409	PLATE, control	1
3	241543	BOARD, control	1
4	111839	SCREW, machine, pan hd, 6-32 x 1/2 in.	5
5	100016	WASHER, lock	2
6	110754	SCREW, cap	2
7	192839	LABEL, caution	1
8	193688	HOUSING, control box	1
9	193657	GASKET, potentiometer	1
10	241443	KIT, potentiometer	1
11	100721	PLUG, pipe	1
12	193685	MANIFOLD	1
13	111457	PACKING, o-ring	1
14	287172	TRANSDUCER, pressure	1
15	113268	BUSHING, universal, snap in	1
16	193053	PLATE, instruction	1
17	114277	SWITCH, rocker, (dpst)	1
18	114273	KNOB, potentiometer	1
19	192831	PLATE, instruction	1
20	220978	CONDUCTOR, electrical	1
23	193072	LABEL, control	1
24	114958	STRAP, tie, (not shown) for wrapping conductor (20) wires	1
25	157705	UNION, swivel	2
26*	100176	FITTING, reducer	2
27*	119400	SEALANT, sst pipe (not shown)	1
30	193690	BRACKET, pressure control	1



* For GM3500 only. Use reducer fittings (26) and pipe sealant (27) for hose connections.

Notes

[illegible]

Graco Standard Warranty

Graco warrants all equipment referenced in this document which is manufactured by Graco and bearing its name to be free from defects in material and workmanship on the date of sale to the original purchaser for use. With the exception of any special, extended, or limited warranty published by Graco, Graco will, for a period of twelve months from the date of sale, repair or replace any part of the equipment determined by Graco to be defective. This warranty applies only when the equipment is installed, operated and maintained in accordance with Graco's written recommendations.

This warranty does not cover, and Graco shall not be liable for general wear and tear, or any malfunction, damage or wear caused by faulty installation, misapplication, abrasion, corrosion, inadequate or improper maintenance, negligence, accident, tampering, or substitution of non-Graco component parts. Nor shall Graco be liable for malfunction, damage or wear caused by the incompatibility of Graco equipment with structures, accessories, equipment or materials not supplied by Graco, or the improper design, manufacture, installation, operation or maintenance of structures, accessories, equipment or materials not supplied by Graco.

This warranty is conditioned upon the prepaid return of the equipment claimed to be defective to an authorized Graco distributor for verification of the claimed defect. If the claimed defect is verified, Graco will repair or replace free of charge any defective parts. The equipment will be returned to the original purchaser transportation prepaid. If inspection of the equipment does not disclose any defect in material or workmanship, repairs will be made at a reasonable charge, which charges may include the costs of parts, labor, and transportation.

THIS WARRANTY IS EXCLUSIVE, AND IS IN LIEU OF ANY OTHER WARRANTIES, EXPRESS OR IMPLIED, INCLUDING BUT NOT LIMITED TO WARRANTY OF MERCHANTABILITY OR WARRANTY OF FITNESS FOR A PARTICULAR PURPOSE.

Graco's sole obligation and buyer's sole remedy for any breach of warranty shall be as set forth above. The buyer agrees that no other remedy (including, but not limited to, incidental or consequential damages for lost profits, lost sales, injury to person or property, or any other incidental or consequential loss) shall be available. Any action for breach of warranty must be brought within two (2) years of the date of sale.

GRACO MAKES NO WARRANTY, AND DISCLAIMS ALL IMPLIED WARRANTIES OF MERCHANTABILITY AND FITNESS FOR A PARTICULAR PURPOSE, IN CONNECTION WITH ACCESSORIES, EQUIPMENT, MATERIALS OR COMPONENTS SOLD BUT NOT MANUFACTURED BY GRACO. These items sold, but not manufactured by Graco (such as electric motors, switches, hose, etc.), are subject to the warranty, if any, of their manufacturer. Graco will provide purchaser with reasonable assistance in making any claim for breach of these warranties.

In no event will Graco be liable for indirect, incidental, special or consequential damages resulting from Graco supplying equipment hereunder, or the furnishing, performance, or use of any products or other goods sold hereto, whether due to a breach of contract, breach of warranty, the negligence of Graco, or otherwise.

FOR GRACO CANADA CUSTOMERS

The Parties acknowledge that they have required that the present document, as well as all documents, notices and legal proceedings entered into, given or instituted pursuant hereto or relating directly or indirectly hereto, be drawn up in English. Les parties reconnaissent avoir convenu que la rédaction du présente document sera en Anglais, ainsi que tous documents, avis et procédures judiciaires exécutés, donnés ou intentés, à la suite de ou en rapport, directement ou indirectement, avec les procédures concernées.

Graco Information

For the latest information about Graco products, visit www.graco.com.

For patent information, see www.graco.com/patents.

TO PLACE AN ORDER, contact your Graco distributor or call 1-800-690-2894 to identify the nearest distributor.

*All written and visual data contained in this document reflects the latest product information available at the time of publication.
Graco reserves the right to make changes at any time without notice.*

Original instructions. This manual contains English. MM 308978

Graco Headquarters: Minneapolis
International Offices: Belgium, China, Japan, Korea

GRACO INC. AND SUBSIDIARIES • P.O. BOX 1441 • MINNEAPOLIS MN 55440-1441 • USA

Copyright 1999, Graco Inc. All Graco manufacturing locations are registered to ISO 9001.

www.graco.com
Revised E, July 2015