

GC0808

Fluid Section



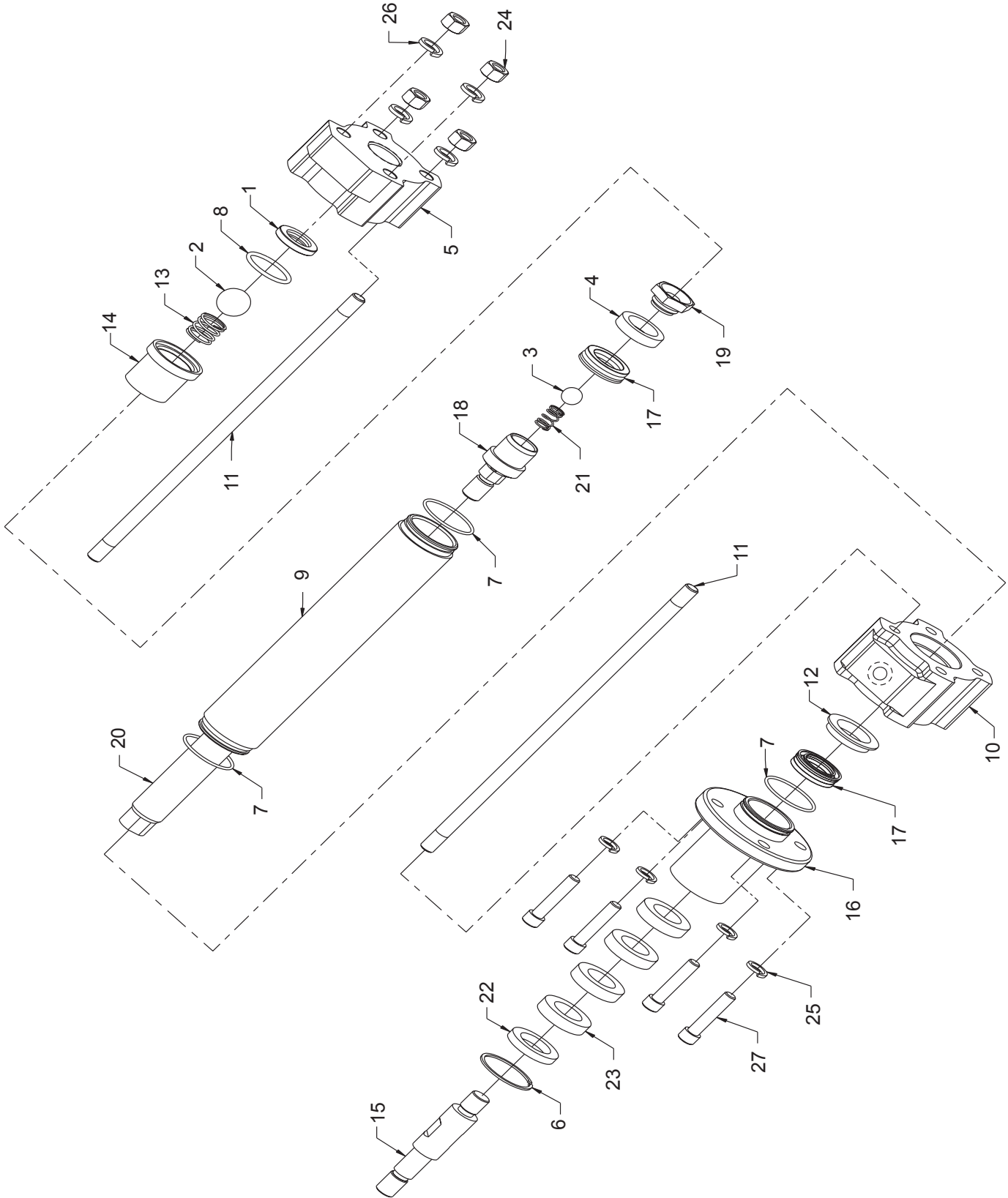
Important Safety Instructions

Read all warnings and instructions in your pump manual. Save all instructions.

PARTS LIST



Fluid Section Assembly - Parts



Fluid Section Assembly - Parts

Ref.	Part	Description	Qty.
1	GC2276	FOOT VALVE SEAT	1
2	GC2277	BALL	1
3	GC2278	BALL	1
4	GC2291	PISTON GUIDE	1
5	GC2317	PUMP BASE	1
6	GC0015	SNAP RING	1
7	GC0049	O-RING	3
8	GC0050	O-RING	1
9	GC0229	PUMP CYLINDER	1
10	GC0231	PUMP HEAD	1
11	GC0233	TIE ROD	4
12	GC0237	SUPPORT WASHER	1
13	GC0306	COMPRESSION SPRING	1
14	GC0307	FOOT VALVE HOUSING	1
15	GC0323	SHAFT EXTENSION	1
16	GC0711	SOLVENT CUP ADAPTER	1
17	GC0745	PUMP SEAL	2
18	GC0746	TRANSFER HOUSING	1
19	GC0747	TRANSFER HOUSING SEAT	1
20	GC0748	PUMP SHAFT	1
21	GC0778	COMPRESSION SPRING	1
22	GC0868	PACKING RETAINER	1
23	GC0872	FELT WIPER	4
24	GC2097	HEX NUT	4
25	GC2110	LOCK WASHER	4
26	GC2113	LOCK WASHER	4
27	GC2255	SCREW	4

Notes

Technical Assistance

Thank You for selecting GlasCraft spray equipment

Should you have any questions or need technical assistance, contact your factory authorized GlasCraft distributor.

Distributor: _____

Phone: _____

Contact: _____



For any issues your distributor cannot address, the GlasCraft technical service department is always available to assist you with the operation of your spray equipment. To help our technical representatives expedite your call and better address your questions, please have the following information ready and available when you phone GlasCraft.

*** If your questions are not urgent, please call 1-800-328-0211.**

Model: _____

Spray gun: _____

Serial number: _____

Material pump: _____

Serial number: _____

Catalyst pump: _____

Chopper: _____

Serial number: _____

Type of material: _____

Type of catalyst: _____

Catalyst percentage: _____

Air compressor size: _____

Compressor to system supply line: _____

Pressure at the system: _____

Main air line volume: _____

System gauge pressures

AAC pressure: _____

Atomizing air pressure: _____
(external mix)

Material pump pressure: _____

Solvent flush pressure: _____

Quality and Performance...

GENUINE GLASCRAFT

Glas.....**Craft**

DISPENSING EXCELLENCE



www.glascraft.com

313287A

5845 WEST 82nd STREET
INDIANAPOLIS, INDIANA 46278
U.S.A.

Phone (317) 875-5592

Fax (317) 875-5456

E-Mail sales@glascraft.com