

Instructions – Parts List



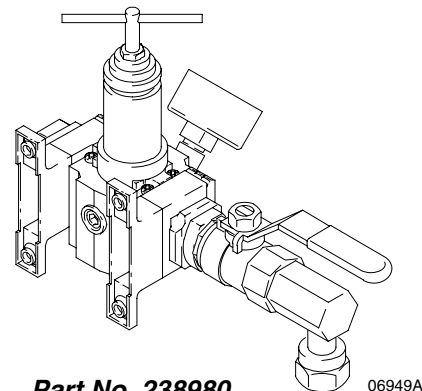
HIGH VOLUME Air Control Kits

250 psi (1.7 MPa, 17.2 bar) Maximum Air Inlet Pressure

308686E

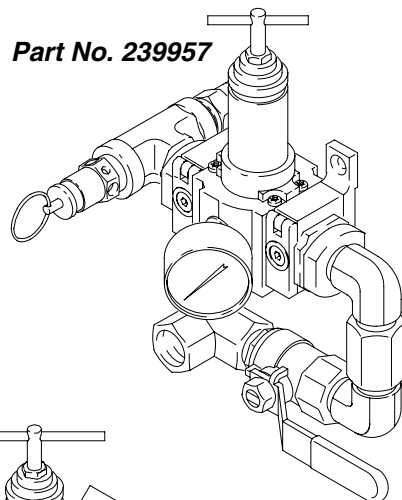
Contents

List of Models	2
Warnings	3
Installation	4
Operation	5
Service	6
Parts	9
Technical Data	13
Graco Warranty	16
Graco Information	16



Part No. 238980

06949A



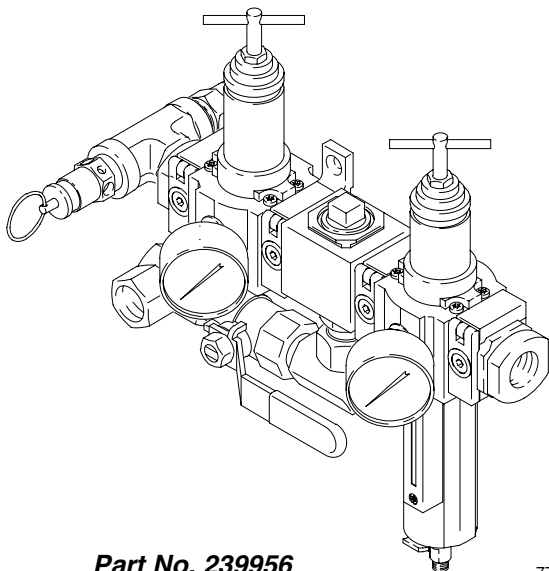
Part No. 239957

7778



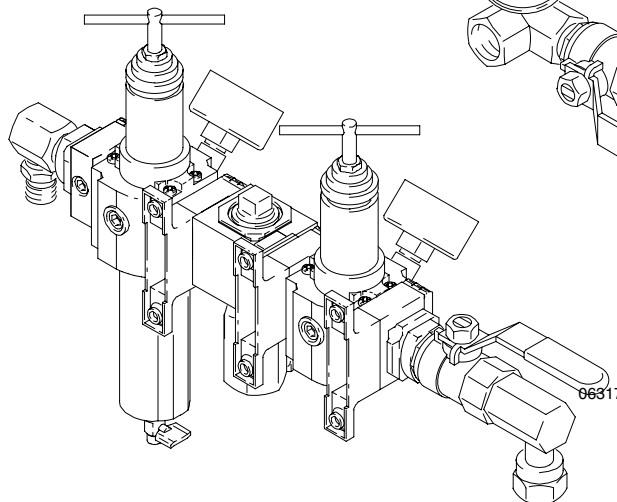
Important Safety Instructions

Read all warning and instructions in this manual. Save these instructions.



Part No. 239956

7792



Part No. 238939

06946A

PROVEN QUALITY. LEADING TECHNOLOGY.



List of Models

Part No.	Series	Description	Maximum Air Input Pressure
238939	A	Air Filter/Regulator Kit, for President® and Monark® cart mount air-assisted pumps	250 psi (1.7 MPa, 17.2 bar)
238980	A	Air Regulator Kit, for President® and Monark® cart mount airless pumps	250 psi (1.7 MPa, 17.2 bar)
239956	A	Air Filter/Regulator Kit, for President® and Monark® wall mount air-assisted pumps	250 psi (1.7 MPa, 17.2 bar)
239957	A	Air Regulator Kit, for President® and Monark® wall mount airless pumps	250 psi (1.7 MPa, 17.2 bar)
239975	A	Air Filter/Regulator Kit, for Monark® light duty cart mount air-assisted pumps	250 psi (1.7 MPa, 17.2 bar)
239976	A	Air Regulator Kit, for Monark® light duty cart mount airless pumps	250 psi (1.7 MPa, 17.2 bar)
240446	A	Air Regulator Kit, for Monark® pail mount air-assisted pumps	250 psi (1.7 MPa, 17.2 bar)
240231	A	Air Regulator Kit, for Monark® pail mount airless pumps	250 psi (1.7 MPa, 17.2 bar)

Symbols

Warning Symbol



This symbol alerts you to the possibility of serious injury or death if you do not follow the instructions.

Caution Symbol



This symbol alerts you to the possibility of damage to or destruction of equipment if you do not follow the instructions.

WARNING



INSTRUCTIONS

EQUIPMENT MISUSE HAZARD

Equipment misuse can cause the equipment to rupture or malfunction and result in serious injury.

- This equipment is for professional use only.
- Read all instruction manuals, tags, and labels before operating the equipment.
- Use the equipment only for its intended purpose. If you are uncertain about usage, call your Graco distributor.
- Do not alter or modify this equipment. Use only genuine Graco parts and accessories.
- Check equipment daily. Repair or replace worn or damaged parts immediately.
- Follow the **Pressure Relief Procedure** on page 5 if the spray tip clogs and before cleaning, checking or servicing the equipment.
- Do not exceed the maximum working pressure of the lowest rated system component. Refer to the **Technical Data** on page 13 for the maximum working pressure of this equipment.
- Always wear protective eyewear when operating or servicing this equipment.
- Comply with all applicable local, state, and national fire, electrical, and safety regulations.

Installation

Prepare the Site

NOTE: Always use Genuine Graco Parts and Accessories, available from your Graco distributor. If you supply your own accessories, be sure they are adequately sized and pressure rated for your system.

Bring a compressed air supply line from the air compressor to the pump location. Be sure all air hoses are properly sized and pressure-rated for your system. Use only electrically conductive hoses.

Before installing any air line components, blow out the air lines to remove scale and other debris. Use pipe compound or tape sparingly and only on male threads.

Install a bleed-type shutoff valve in the air line upstream from all other air line components, to isolate them for servicing.

⚠ CAUTION

Do not hang the air control kit directly off the pump air motor inlet, which could be damaged by the weight and operating stress. Use a bracket to mount the kit to a cart or to the wall.

Kit Components (see page 9)

⚠ WARNING

A red-handled bleed-type master air valve (5) is supplied. This valve relieves air trapped between it and the pump when the valve is closed, to help reduce the risk of serious injury, including fluid injection and splashing of fluid in the eyes or on the skin, and injury from moving parts if you are adjusting or repairing the pump.

- **The red-handled bleed-type master air valve (5)** is supplied to relieve air trapped between it and the air motor when the valve is closed (see the **WARNING** above). Be sure the bleed valve is easily accessible from the pump, and is located **downstream** from the air regulator (3).
- **The pump air regulator (3)** controls pump speed and outlet pressure by adjusting the air pressure to the pump. Locate the regulator as close as possible to the equipment it serves, but **upstream** from the bleed-type master air valve (5). Install the regulator in the air line so the air flow is in the direction of the arrow stamped on the body.
- **The gun air regulator (8, included in Kits 238939, 239956, 239975, and 240446 only)** adjusts the air pressure to an air-assisted spray gun. Some models include a filter to remove harmful dirt and moisture from the compressed air supply.
- **The air manifold (7, included in Kits 238939, 239956, 239975, and 240446 only)** provides ports for connecting lines to air-powered accessories.

Using the Quick Connectors

To open a quick connector (2), loosen the captive screw (S) and open the connector. Slide the desired component into the connector, close, and tighten the screw. See Fig. 1.

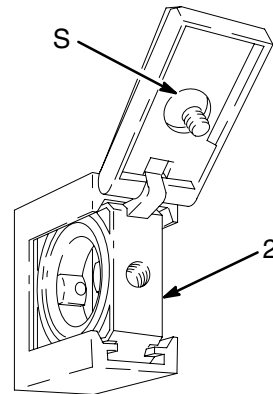


Fig. 1

06278

Operation

Pressure Relief Procedure

WARNING



SKIN INJECTION HAZARD

The system pressure must be manually relieved to prevent the system from starting or spraying accidentally. Fluid under high pressure can be injected through the skin and cause serious injury. To reduce the risk of an injury from injection, splashing fluid, or moving parts, follow the **Pressure Relief Procedure** whenever you:

- are instructed to relieve the pressure,
- stop spraying,
- check or service any of the system equipment,
- or install or clean the spray tips.

1. Lock the gun trigger safety.
2. Close all bleed-type master air valves, including the red-handled bleed-type master air valve (5, supplied in your system).
3. Turn the regulator T-handle all the way counterclockwise if you are removing the air filter/regulator (8) bowl, or servicing the air regulators (3 and 8).
4. Open any fluid shutoff valves.
5. Unlock the gun trigger safety.
6. Hold a metal part of the gun firmly to the side of a grounded metal pail, and trigger the gun to relieve pressure.
7. Lock the gun trigger safety.
8. Open any fluid drain valves (required in your system), having a container ready to catch the drainage.

9. Leave the drain valve(s) open until you are ready to spray again.

*If you suspect that the spray tip or hose is completely clogged, or that pressure has not been fully relieved after following the steps above, **very slowly** loosen the tip guard retaining nut or hose end coupling and relieve pressure gradually, then loosen completely. Now clear the tip or hose.*

Adjusting the Air Regulator

1. **To increase** the regulated air pressure, turn the T-handle **clockwise**.
2. **To decrease** the regulated air pressure, turn the T-handle **counterclockwise**.
3. To lock the regulator setting, tighten the jam nut.
4. Open the air regulator slowly. Use it to control pump speed and fluid pressure. Always use the lowest air pressure necessary to get the desired results. Higher pressures cause premature tip and pump wear.

WARNING

COMPONENT RUPTURE HAZARD



To reduce the risk of overpressurizing your system, which could cause component rupture and serious injury, *never exceed the specified Maximum Incoming Air Pressure of the equipment* (see the **Technical Data** on page 13 and in your separate component manuals).

Air-Assisted Kits 238939, 239956, 239975, and 240446

Use the gun air filter/regulator (8) to control the air pressure to the gun.

Spray some test patterns before doing any finished work. Refer to your separate gun manual for detailed information on correct spraying technique.

Service

Air Filter Service

Repair Kits are available. Refer to page 7.

Every day, drain contaminants from the bowl before reaching the baffle level by opening the drain (D) at the bottom of the bowl (B).

WARNING

To reduce the risk of serious injury whenever you are instructed to relieve pressure, always follow the **Pressure Relief Procedure** on page 5.

Clean the air filter regularly to maximize filtering efficiency and to avoid excessive pressure drop. Fully relieve pressure to remove the bowl (B).

Clean the filter element (111) and bowl using household soap and water or denatured alcohol. Use compressed air to blow out the filter body. Blow the filter element out from the inside.

Clean the sight glass (109) thoroughly. Do not leave solvent residue in the sight glass as it may attack or weaken the glass. If the sight glass appears damaged, replace it immediately.

Air Regulator Service

Repair Kits are available. Refer to pages 7 and 8.

If the regulator fails to operate, operates roughly, or vibrates, service it as follows.

WARNING

To reduce the risk of serious injury whenever you are instructed to relieve pressure, always follow the **Pressure Relief Procedure** on page 5.

Fully relieve pressure and remove the regulator from the air line.

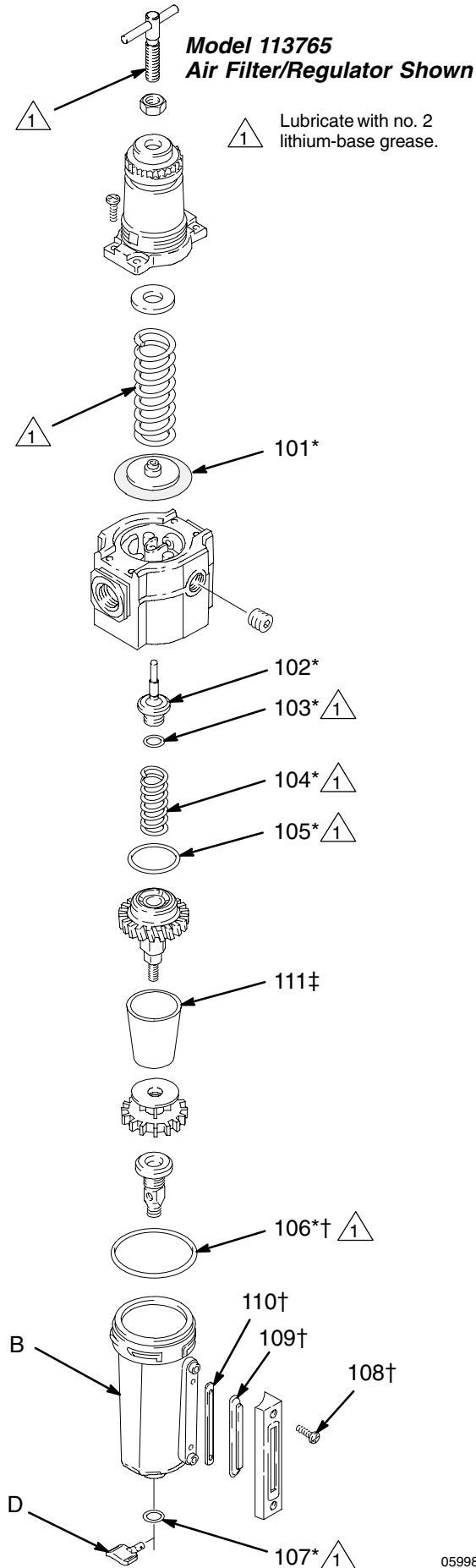
Refer to pages 7 and 8. Disassemble the regulator. If it is a filter/regulator, clean the filter bowl and element as described under **Air Filter Service**.

Clean the parts with household soap and water or denatured alcohol. Wipe dry with a clean, soft cloth. Use compressed air to blow dirt and contaminants out of the regulator body.

Inspect all parts for wear or damage. Replace damaged parts.

Lubricate the bearing area, all o-rings, adjusting screw threads, and spring ends with no. 2 lithium-base grease. Reassemble the regulator.

Service



Repair Kit 239383 (includes items 101 to 107). For Part No. 113765 Air Filter/Regulator.

Kit parts are marked with an asterisk (101*). Individual parts are not available separately.

Ref. No.	Part No.	Description	Qty.
101*	N/A	DIAPHRAGM	1
102*	N/A	VALVE ASSEMBLY	1
103*	N/A	O-RING, valve	1
104*	N/A	SPRING, valve	1
105*	N/A	O-RING, center post	1
106*	N/A	O-RING, bowl assembly	1
107*	N/A	GASKET, drain	1

Sight Glass Kit 239385 (includes items 106 to 110). For Part No. 113765 Air Filter/Regulator.

Kit parts are marked with a symbol (108†). Individual parts are not available separately.

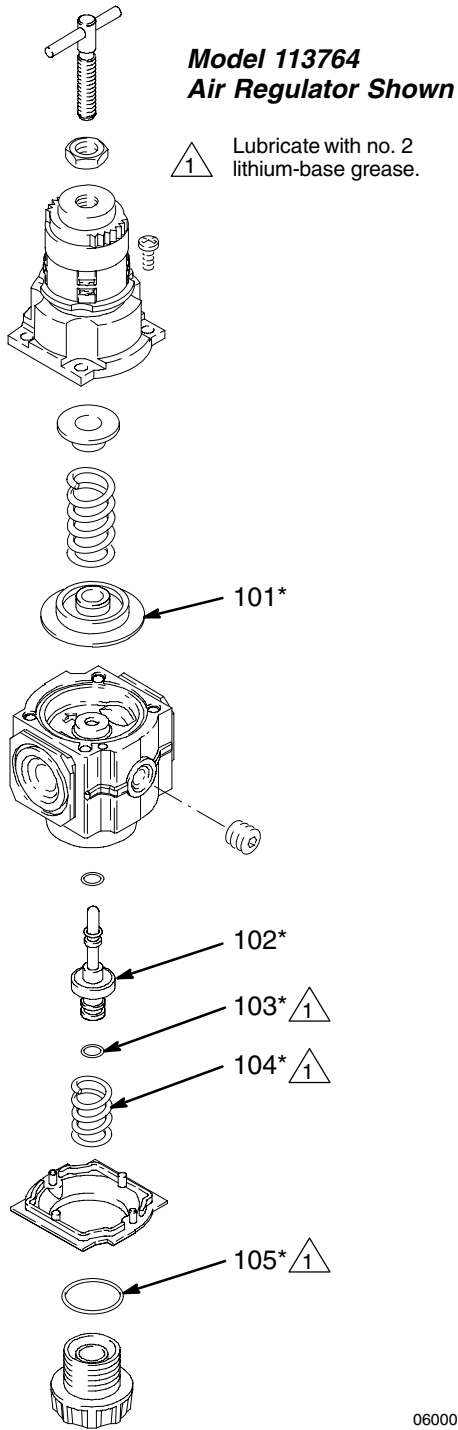
Ref. No.	Part No.	Description	Qty.
106†	N/A	O-RING, bowl assembly	1
108†	N/A	SCREW	2
109†	N/A	LENS, sight glass	1
110†	N/A	SEAL, lens	1

Filter Element Kit 239384 (includes item 111). For Part Nos. 113765 Air Filter/Regulator.

Kit parts are marked with a symbol (111‡). Individual parts are not available separately.

Ref. No.	Part No.	Description	Qty.
111‡	N/A	ELEMENT, 40 micron; polypropylene	1

Service



Repair Kit 238917 (includes items 101 to 105). For Part No. 113764 Air Regulator.

Kit parts are marked with an asterisk (101*). Individual parts are not available separately.

Ref. No.	Part No.	Description	Qty.
101*	N/A	DIAPHRAGM	1
102*	N/A	VALVE ASSEMBLY	1
103*	N/A	O-RING, valve	1
104*	N/A	SPRING, valve	1
105*	N/A	O-RING, plug	1

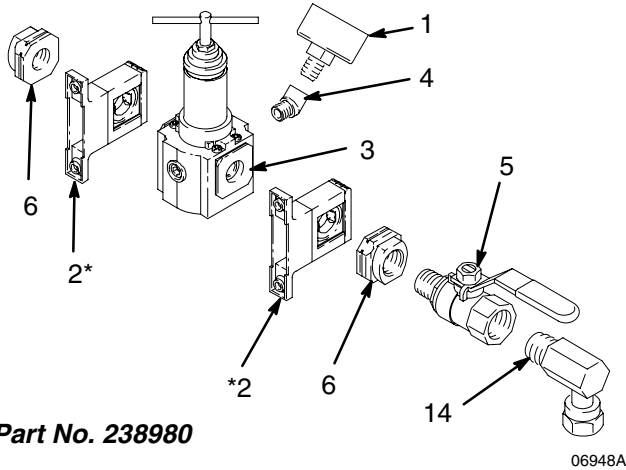
06000

Air Control Kit Parts

Part No. 238980, Series A

Ref. No.	Part No.	Description	Qty.
1	113911	GAUGE, air	1
2*	113763	CLAMP, wall mount	2
3	113764	AIR REGULATOR; 3/8 npt(f) inlet and outlet; 5–150 psi (.03–0.1 MPa, 0.3–10 bar) pressure range	1
4	113630	ELBOW, 45°; 1/8 npt (m x f)	1
5	113333	BLEED VALVE, red-handled; 3/8 npt (m x f)	1
6	113767	ADAPTER, pipe; 3/8 npt(f)	2
14	155494	UNION, swivel, 90°; 3/8 npt(m) x 3/8 npt(f)	1

*Repair Kit 247568, containing 2 o-rings, is available for purchase separately. Order 1 kit per bracket.

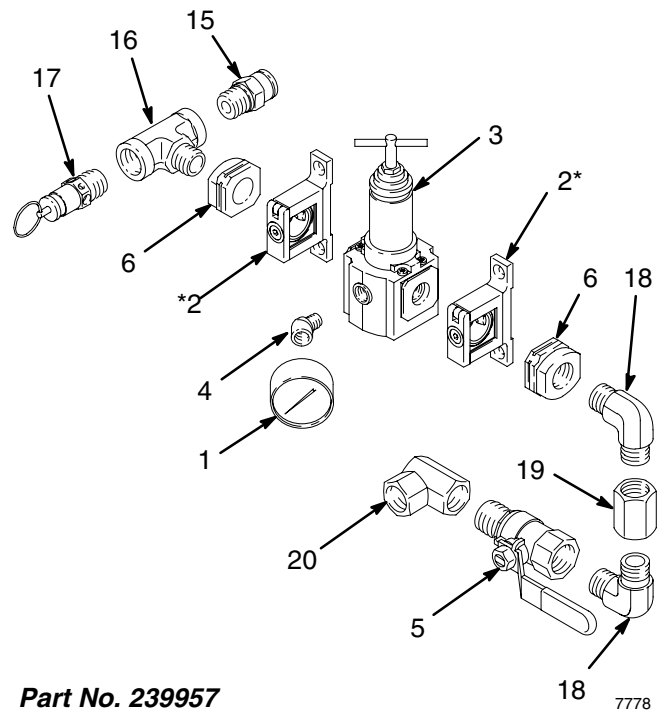


Part No. 238980

Part No. 239957, Series A

Ref. No.	Part No.	Description	Qty.
1	113911	GAUGE, air	1
2*	113763	CLAMP, wall mount	2
3	113764	AIR REGULATOR; 3/8 npt(f) inlet and outlet; 5–150 psi (.03–0.1 MPa, 0.3–10 bar) pressure range	1
4	113630	ELBOW, 45°; 1/8 npt (m x f)	1
5	113333	BLEED VALVE, red-handled; 3/8 npt (m x f)	1
6	113767	ADAPTER, pipe; 3/8 npt(f)	2
15	114129	CONNECTOR, tube; 3/8 npt(m) x 1/2 in. (13 mm) OD tube	1
16	113777	TEE; 3/8 npt(f) run x 3/8 npt(m) branch	1
17	113769	VALVE, relief; 125 psi (0.86 MPa, 8.6 bar)	1
18	109544	ELBOW; 3/8 npt (mbe)	2
19	162024	COUPLING; 3/8 npt (fbe)	1
20	155677	UNION, swivel, 90°; 3/8 npt(f) x 3/8 npsm(f)	1

*Repair Kit 247568, containing 2 o-rings, is available for purchase separately. Order 1 kit per bracket.



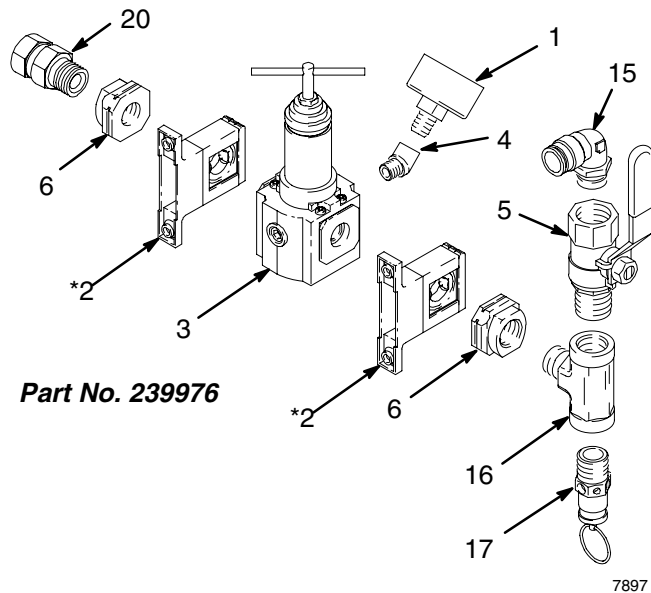
Part No. 239957

Air Control Kit Parts

Part No. 239976, Series A

Ref. No.	Part No.	Description	Qty.
1	113911	GAUGE, air	1
2*	113763	CLAMP, wall mount	2
3	113764	AIR REGULATOR; 3/8 npt(f) inlet and outlet; 5–150 psi (.03–0.1 MPa, 0.3–10 bar) pressure range	1
4	113630	ELBOW, 45°; 1/8 npt (m x f)	1
5	113333	BLEED VALVE, red-handled; 3/8 npt (m x f)	1
6	113767	ADAPTER, pipe; 3/8 npt(f)	2
15	114114	CONNECTOR, tube, 90°; 3/8 npt(m) x 1/2 in. (13 mm) OD tube	1
16	113777	TEE; 3/8 npt(f) run x 3/8 npt(m) branch	1
17	113769	VALVE, relief; 125 psi (0.86 MPa, 8.6 bar)	1
20	155665	UNION, swivel; 3/8 npt(m) x 3/8 npsm(f)	1

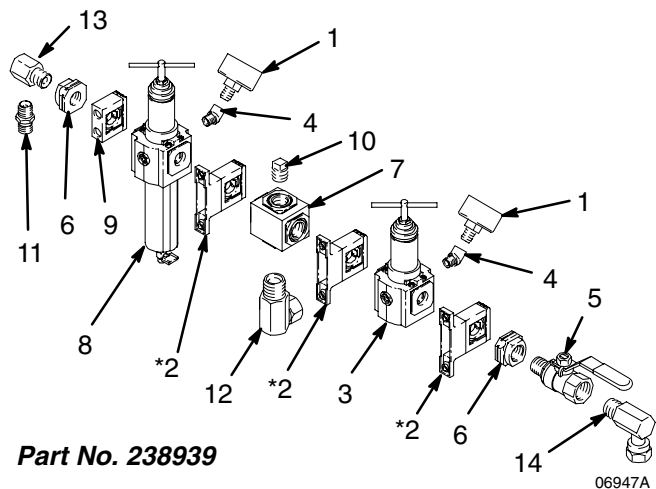
*Repair Kit 247568, containing 2 o-rings, is available for purchase separately. Order 1 kit per clamp.



Part No. 238939, Series A

Ref. No.	Part No.	Description	Qty.
1	113911	GAUGE, air	2
2*	113763	CLAMP, wall mount	3
3	113764	AIR REGULATOR; 3/8 npt(f) inlet and outlet; 5–150 psi (.03–0.1 MPa, 0.3–10 bar) pressure range	1
4	113630	ELBOW, 45°; 1/8 npt (m x f)	2
5	113333	BLEED VALVE, red-handled; 3/8 npt (m x f)	1
6	113767	ADAPTER, pipe; 3/8 npt(f)	2
7	113762	MANIFOLD, air; four 3/8 npt(f) ports	1
8	113765	AIR FILTER/REGULATOR; 3/8 npt(f) inlet and outlet; 5–150 psi (.03–0.1 MPa, 0.3–10 bar) pressure range; 40 micron polypropylene filter	1
9	113766	CONNECTOR, quick	1
10	100040	PLUG, pipe; 3/8 npt	1
11	162453	NIPPLE; 1/4 npt x 1/4 npsm	1
12	217430	ADAPTER, swivel, 90°; 3/8 npt(m) x 1/2 npt(f)	1
13	164259	ELBOW, street, 90°; 3/8 npt(m) x 1/4 npt(f)	1
14	155494	UNION, swivel, 90°; 3/8 npt(m) x 3/8 npt(f)	1

*Repair Kit 247568, containing 2 o-rings, is available for purchase separately. Order 1 kit per clamp.

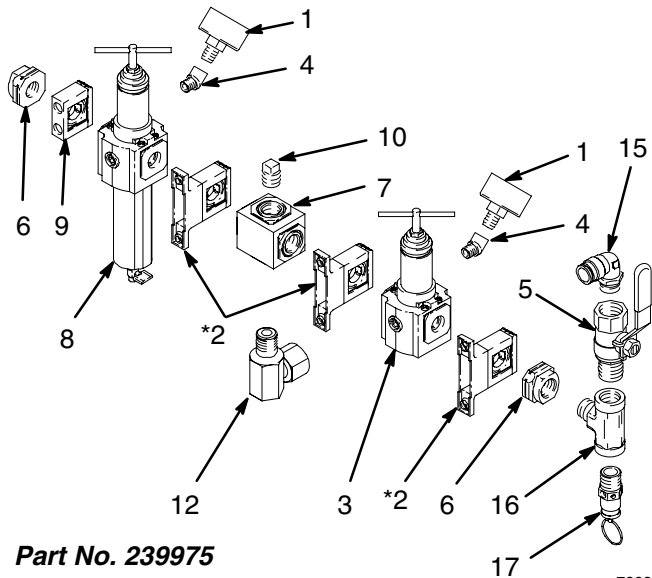


Air Control Kit Parts

Part No. 239975, Series A

Ref. No.	Part No.	Description	Qty.
1	113911	GAUGE, air	2
2*	113763	CLAMP, wall mount	3
3	113764	AIR REGULATOR; 3/8 npt(f) inlet and outlet; 5–150 psi (.03–0.1 MPa, 0.3–10 bar) pressure range	1
4	113630	ELBOW, 45°; 1/8 npt (m x f)	2
5	113333	BLEED VALVE, red-handled; 3/8 npt (m x f)	1
6	113767	ADAPTER, pipe; 3/8 npt(f)	2
7	113762	MANIFOLD, air; four 3/8 npt(f) ports	1
8	113765	AIR FILTER/REGULATOR; 3/8 npt(f) inlet and outlet; 5–150 psi (.03–0.1 MPa, 0.3–10 bar) pressure range; 40 micron polypropylene filter	1
9	113766	CONNECTOR, quick	1
10	100040	PLUG, pipe; 3/8 npt	1
12	217430	ADAPTER, swivel, 90°; 3/8 npt(m) x 1/2 npt(f)	1
15	114114	CONNECTOR, tube, 90°; 3/8 npt(m) x 1/2 in. (13 mm) OD tube	1
16	113777	TEE; 3/8 npt(f) run x 3/8 npt(m) branch	1
17	113769	VALVE, relief; 125 psi (0.86 MPa, 8.6 bar)	1

*Repair Kit 247568, containing 2 o-rings, is available for purchase separately. Order 1 kit per clamp.



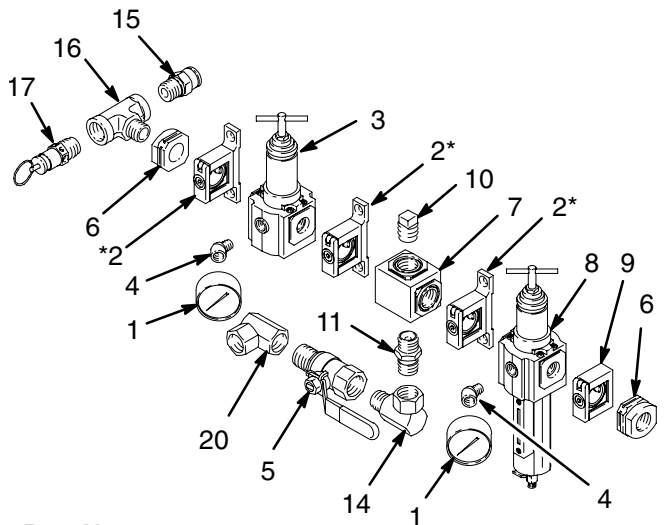
Part No. 239975

7898

Part No. 239956, Series A

Ref. No.	Part No.	Description	Qty.
1	113911	GAUGE, air	2
2*	113763	CLAMP, wall mount	3
3	113764	AIR REGULATOR; 3/8 npt(f) inlet and outlet; 5–150 psi (.03–0.1 MPa, 0.3–10 bar) pressure range	1
4	113630	ELBOW, 45°; 1/8 npt (m x f)	2
5	113333	BLEED VALVE, red-handled; 3/8 npt (m x f)	1
6	113767	ADAPTER, pipe; 3/8 npt(f)	2
7	113762	MANIFOLD, air; four 3/8 npt(f) ports	1
8	113765	AIR FILTER/REGULATOR; 3/8 npt(f) inlet and outlet; 5–150 psi (.03–0.1 MPa, 0.3–10 bar) pressure range; 40 micron polypropylene filter	1
9	113766	CONNECTOR, quick	1
10	100040	PLUG, pipe; 3/8 npt	1
11	162485	NIPPLE; 3/8 npt x 3/8 npsm	1
14	155494	UNION, swivel, 90°; 3/8 npt(m) x 3/8 npt(f)	1
15	114129	CONNECTOR, tube; 3/8 npt(m) x 1/2 in. (13 mm) OD tube	1
16	113777	TEE; 3/8 npt(f) run x 3/8 npt(m) branch	1
17	113769	VALVE, relief; 125 psi (0.86 MPa, 8.6 bar)	1
20	155677	UNION, swivel, 90°; 3/8 npt(f) x 3/8 npsm(f)	1

*Repair Kit 247568, containing 2 o-rings, is available for purchase separately. Order 1 kit per clamp.



Part No. 239956

7792

Air Control Kit Parts

Part No. 240231, Series A

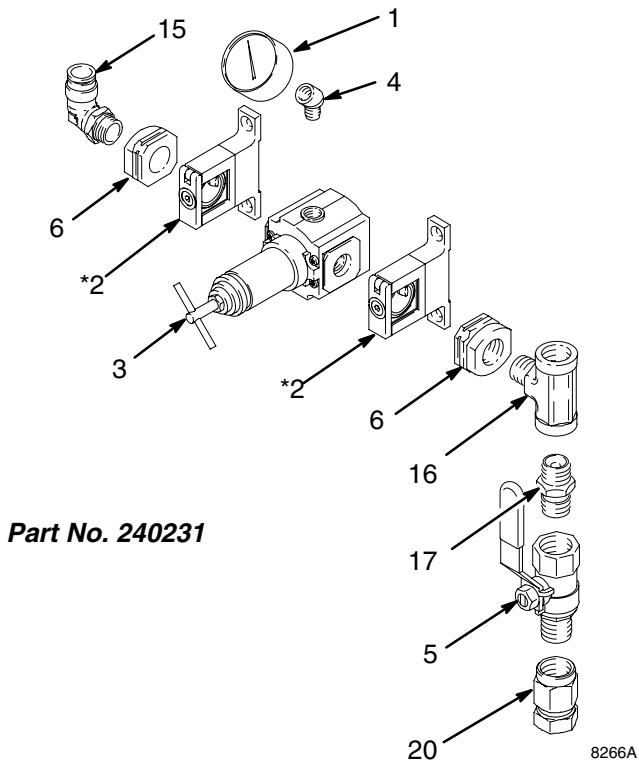
Ref. No.	Part No.	Description	Qty.
1	113911	GAUGE, air	1
2*	113763	CLAMP, wall mount	2
3	113764	AIR REGULATOR; 3/8 npt(f) inlet and outlet; 5–150 psi (.03–0.1 MPa, 0.3–10 bar) pressure range	1
4	113630	ELBOW, 45°; 1/8 npt (m x f)	1
5	113333	BLEED VALVE, red-handled; 3/8 npt (m x f)	1
6	113767	ADAPTER, pipe; 3/8 npt(f)	2
15	114114	CONNECTOR, tube, 90°; 3/8 npt(m) x 1/2 in. (13 mm) OD tube	1
16	113777	TEE; 3/8 npt(f) run x 3/8 npt(m) branch	1
19	156849	NIPPLE; 3/8 npt	1
20	156173	UNION, swivel, straight 3/8 npt(f) x 3/8 npsm(f)	1

*Repair Kit 247568, containing 2 o-rings, is available for purchase separately. Order 1 kit per clamp.

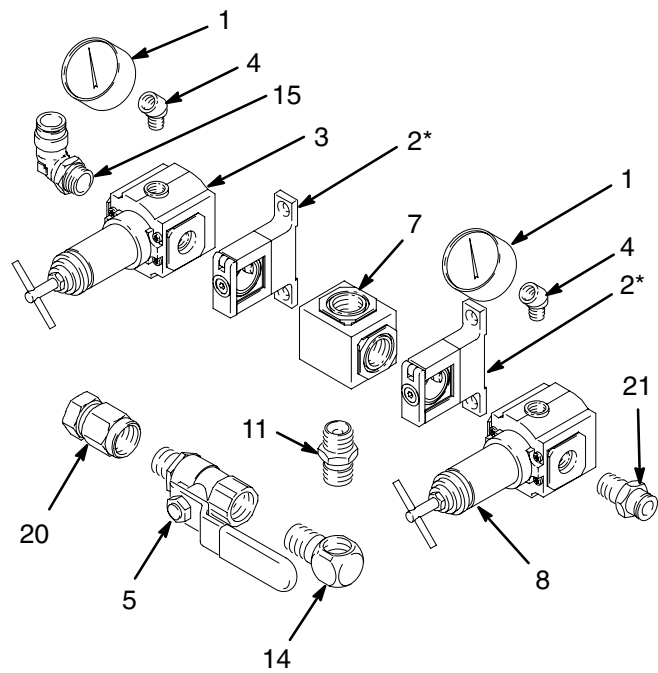
Part No. 240446, Series A

Ref. No.	Part No.	Description	Qty.
1	113911	GAUGE, air	2
2*	113763	CLAMP, wall mount	2
3	113764	AIR REGULATOR, pump; 3/8 npt(f) inlet and outlet; 5–150 psi (.03–0.1 MPa, 0.3–10 bar) pressure range	1
4	113630	ELBOW, 45°; 1/8 npt (m x f)	2
5	113333	BLEED VALVE, red-handled; 3/8 npt (m x f)	1
7	113762	MANIFOLD, air; four 3/8 npt(f) ports	1
8	113764	AIR REGULATOR, gun; 3/8 npt(f) inlet and outlet; 5–150 psi (.03–0.1 MPa, 0.3–10 bar) pressure range	1
11	156849	NIPPLE; 3/8 npt	1
14	155699	ELBOW; 3/8 npt (mx f)	2
15	114114	CONNECTOR, tube, 90°; 3/8 npt(m) x 1/2 in. (13 mm) OD tube	1
20	156173	UNION, swivel, straight 3/8 npt(f) x 3/8 npsm(f)	1
21	114485	CONNECTOR, tube; 3/8 npt(m) x 3/8 in. (10 mm) OD tube	1

*Repair Kit 247568, containing 2 o-rings, is available for purchase separately. Order 1 kit per clamp.



Part No. 240231

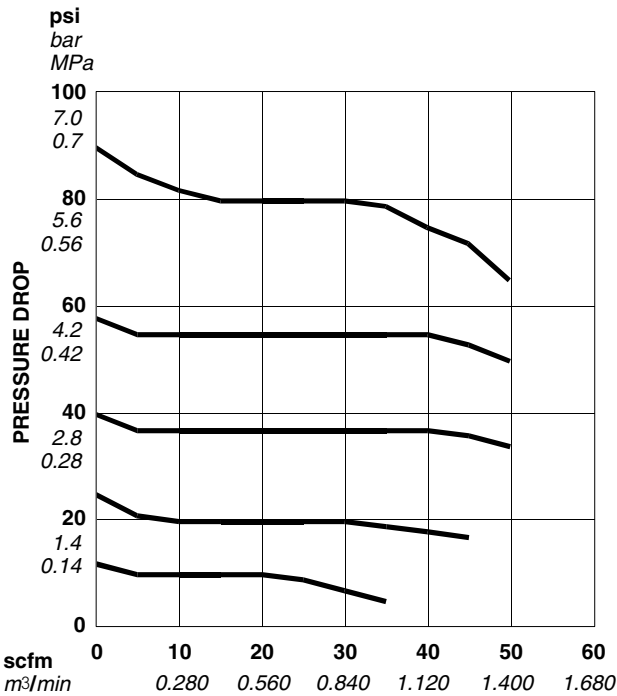


Part No. 240446

Technical Data

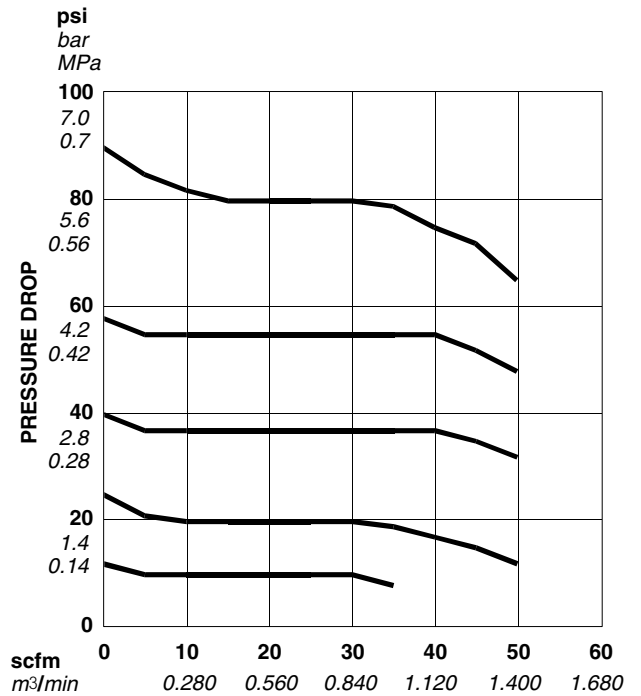
Category	Data
Maximum air input pressure	250 psi (1.7 MPa, 17.2 bar)
Air inlet size	Part Nos. 238980, 239956, 239957, 239976, 240231, and 240446: 3/8 npsm(f) Part No. 238939, 239975: 1/2 npt(f) swivel
Air outlet size (air regulator)	3/8 npt(f)
Gauge port size (air regulator)	1/8 npt(f)
Manual drain thread size (air filter/regulator)	7/16–24 uns(m)
Air filter/regulator element	40 micron polypropylene screen
Maximum operating temperature	79°C (175°F)

MODEL 113765 AIR FILTER/REGULATOR FLOW CURVE



AIR FLOW AT INLET PRESSURE OF 100 PSI (0.7 MPa, 7 BAR)

MODEL 113764 AIR REGULATOR FLOW CURVE



AIR FLOW AT INLET PRESSURE OF 100 PSI (0.7 MPa, 7 BAR)

Manual Change Summary

Models 240231 and 240446 are added to the manual.

Graco Standard Warranty

Graco warrants all equipment manufactured by Graco and bearing its name to be free from defects in material and workmanship on the date of sale to the original purchaser for use. With the exception of any special, extended, or limited warranty published by Graco, Graco will, for a period of twelve months from the date of sale, repair or replace any part of the equipment determined by Graco to be defective. This warranty applies only when the equipment is installed, operated and maintained in accordance with Graco's written recommendations.

This warranty does not cover, and Graco shall not be liable for general wear and tear, or any malfunction, damage or wear caused by faulty installation, misapplication, abrasion, corrosion, inadequate or improper maintenance, negligence, accident, tampering, or substitution of non-Graco component parts. Nor shall Graco be liable for malfunction, damage or wear caused by the incompatibility of Graco equipment with structures, accessories, equipment or materials not supplied by Graco, or the improper design, manufacture, installation, operation or maintenance of structures, accessories, equipment or materials not supplied by Graco.

This warranty is conditioned upon the prepaid return of the equipment claimed to be defective to an authorized Graco distributor for verification of the claimed defect. If the claimed defect is verified, Graco will repair or replace free of charge any defective parts. The equipment will be returned to the original purchaser transportation prepaid. If inspection of the equipment does not disclose any defect in material or workmanship, repairs will be made at a reasonable charge, which charges may include the costs of parts, labor, and transportation.

THIS WARRANTY IS EXCLUSIVE, AND IS IN LIEU OF ANY OTHER WARRANTIES, EXPRESS OR IMPLIED, INCLUDING BUT NOT LIMITED TO WARRANTY OF MERCHANTABILITY OR WARRANTY OF FITNESS FOR A PARTICULAR PURPOSE.

Graco's sole obligation and buyer's sole remedy for any breach of warranty shall be as set forth above. The buyer agrees that no other remedy (including, but not limited to, incidental or consequential damages for lost profits, lost sales, injury to person or property, or any other incidental or consequential loss) shall be available. Any action for breach of warranty must be brought within two (2) years of the date of sale.

Graco makes no warranty, and disclaims all implied warranties of merchantability and fitness for a particular purpose in connection with accessories, equipment, materials or components sold but not manufactured by Graco. These items sold, but not manufactured by Graco (such as electric motors, switches, hose, etc.), are subject to the warranty, if any, of their manufacturer. Graco will provide purchaser with reasonable assistance in making any claim for breach of these warranties.

In no event will Graco be liable for indirect, incidental, special or consequential damages resulting from Graco supplying equipment hereunder, or the furnishing, performance, or use of any products or other goods sold hereto, whether due to a breach of contract, breach of warranty, the negligence of Graco, or otherwise.

FOR GRACO CANADA CUSTOMERS

The parties acknowledge that they have required that the present document, as well as all documents, notices and legal proceedings entered into, given or instituted pursuant hereto or relating directly or indirectly hereto, be drawn up in English. Les parties reconnaissent avoir convenu que la rédaction du présente document sera en Anglais, ainsi que tous documents, avis et procédures judiciaires exécutés, donnés ou intentés à la suite de ou en rapport, directement ou indirectement, avec les procédures concernées.

Graco Phone Number

TO PLACE AN ORDER, contact your Graco distributor, or call this number to identify the distributor closest to you:

Phone: 612-623-6921 or **Toll Free:** 1-800-328-0211; **Fax:** 612-378-3505

All written and visual data contained in this document reflects the latest product information available at the time of publication.

Graco reserves the right to make changes at any time without notice.

This manual contains English. MM 308686

Graco Headquarters: Minneapolis

International Offices: Belgium, China, Japan, Korea

GRACO INC. P.O. BOX 1441 MINNEAPOLIS, MN 55440-1441

<http://www.graco.com>

©1998-1997 Graco Inc. 308686 Rev. E October 2007