

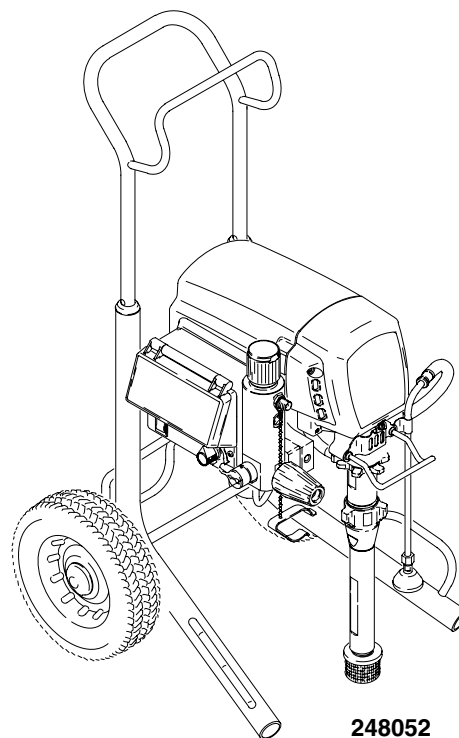
Ultra Max II 695/795/1095™

309954E

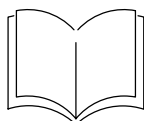
3300 psi (228 bar, 22.8 MPa) Maximum Working Pressure

100 VAC Japan/Taiwan

Ultra Max II	Series	Lo-boy	Hi-boy
695	A	248053	248052
795	A	248055	248054
1095	A		248056



Related manuals



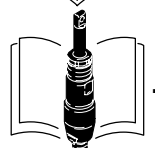
..... 309939



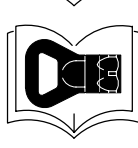
..... 309639



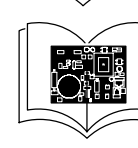
..... 309941



..... 310643



..... 309640

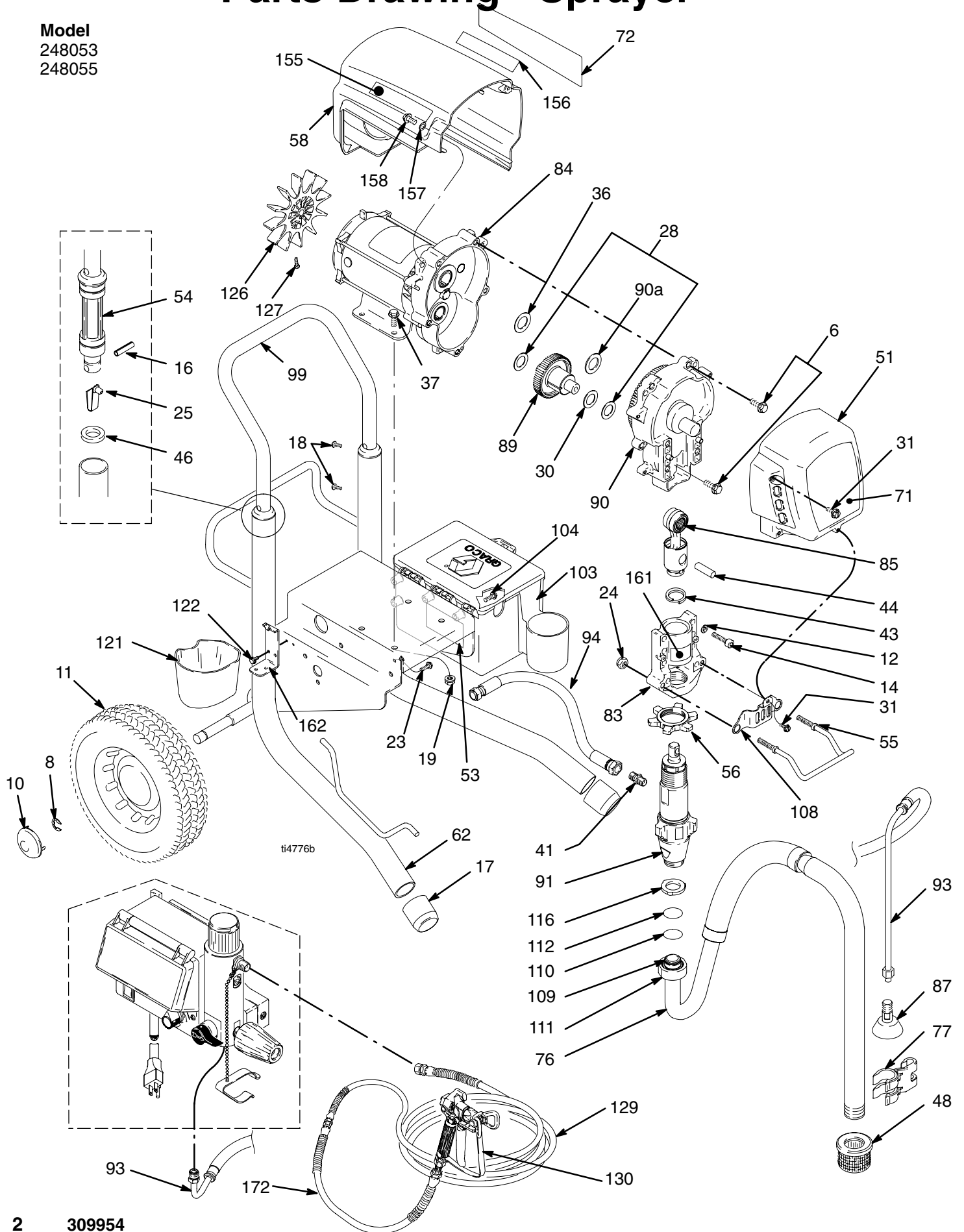


..... 310657

PROVEN QUALITY. LEADING TECHNOLOGY.

Parts Drawing - Sprayer

Model
248053
248055



Parts List - Sprayer

Ultra Max 695: 248053, B

Ultra Max 795: 248055, B

Ref No.	Part No.	Description	Qty	Ref No.	Part No.	Description	Qty
6	15C753	SCREW, mach, torx, hex wash hd	5	77	15D000	CLIP, drain line	1
8	101242	RING, retaining, ext	2	79	206994	FLUID, TSL, 8 oz (not shown)	1
10	104811	CAP, hub	2	83	240523	HOUSING, bearing, includes 24, 55	1
11	106062	WHEEL, semi pneumatic	2	84		MOTOR, electric; includes 126, 127	1
12	106115	WASHER, lock spring (hi-collar)	4		287197	695	1
14	110141	SCREW, cap, socket hd	4		287198	795	1
16	101354	PIN, spring	2	85	241008	ROD, connecting; includes 43	1
17	15C871	CAP, leg	2	87	241920	DEFLECTOR, threaded	1
18	109032	SCREW, mach, pnh	4	89	287289	GEAR, combination; includes 28, 30	1
19	110996	NUT, hex, flanged	4	90		HOUSING, drive; includes 6, 36, 90a	1
23	110963	SCREW, cap, flng hd	2		287283	695	1
24	112746	NUT, hex	2		287284	795	1
25	112827	BUTTON, snap	2	90a	107089	WASHER, thrust	1
28	114672	WASHER, thrust	2	91	248204	PUMP, displacement; includes 109	1
30	114699	WASHER, thrust	1			Manual, 310643	
31	118444	SCREW, machine hex washer head	5	93	248217	HOSE, drain; includes 87	1
36	116191	WASHER, thrust	1	94	15D049	HOSE	1
37	100057	SCREW, hex hd	4	99	15G023	HANDLE, cart	1
41	162453	NIPPLE, (1/4 npsm x 1/4 npt)	1	103	287253	TOOL BOX; includes 104	1
43	176817	SPRING, retaining	1	104	118852	SCREW, hex washer hd	3
44	176818	PIN, str, hdl	1	108	15C859	SHIELD, pump rod	1
46	183350	WASHER	2	109	117559	O-RING	2
48	189920	STRAINER, (1-11 1/2 npsm)	1	110	15C981	WASHER, suction swivel	1
51	287291	COVER, drive, painted; includes 31, 157, 158	1	111	15C980	NUT, jam	1
54	192027	SLEEVE, cart	2	112	118505	RING, retaining, external	1
55	15D416	HANGER, pail	1	116	115099	WASHER, garden hose	1
56	192723	NUT, retaining	1	121	276975	CUP, drain	1
58		SHIELD, motor, painted; includes 157, 158		122	114423	SCREW, hex hd	2
	287281	695	1	126	15D088	FAN, motor	1
	287282	795	1	127	115477	SCREW, mach., torx pan hd	1
62	287168	FRAME, cart, Lo-boy	1	128▲	222385	TAG, WARNING, (not shown)	1
71		LABEL, front		129	240794	HOSE, cpld, 1/4 x 50 ft, unpkgd	1
	15D065	695	1	130	246233	GUN, FTx-A	1
	15D068	795	1			Manual 309640	
72		LABEL, side		157	276980	GROMMET	2
	15D066	695	1	158	119250	SCREW, shoulder	2
	15D069	795	1	161	187436	LABEL, torque	1
76	248216	HOSE, suction; includes 109, 110, 111, 112, 116	1	162	15F952	BRACKET, suction	1
				172	238358	HOSE, cpld, 3/16 in. x 3 ft	1

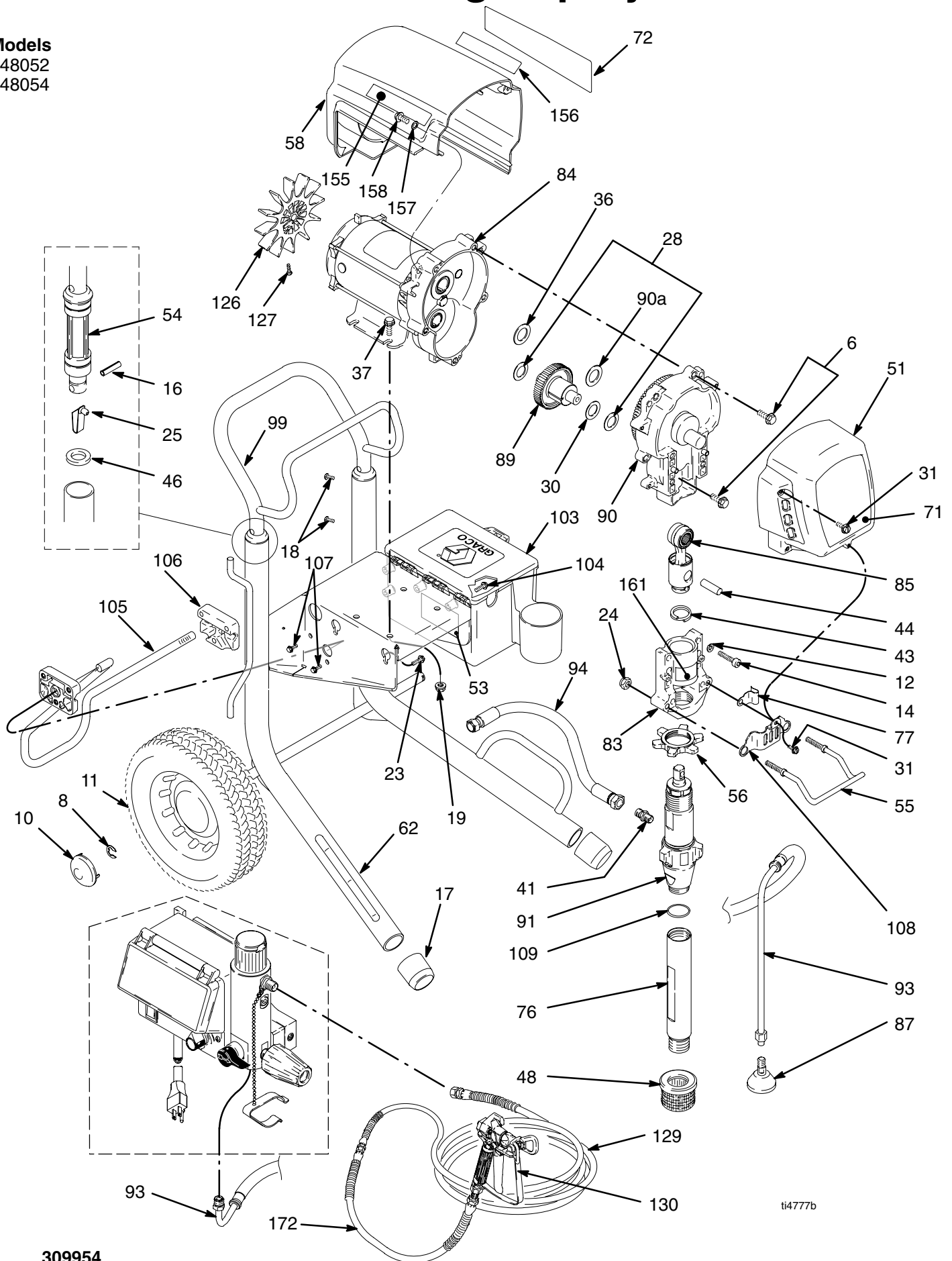
▲ Extra Danger and Warning tags and labels available free.

Parts Drawing - Sprayer

Models

248052

248054



ti4777b

Parts List - Sprayer

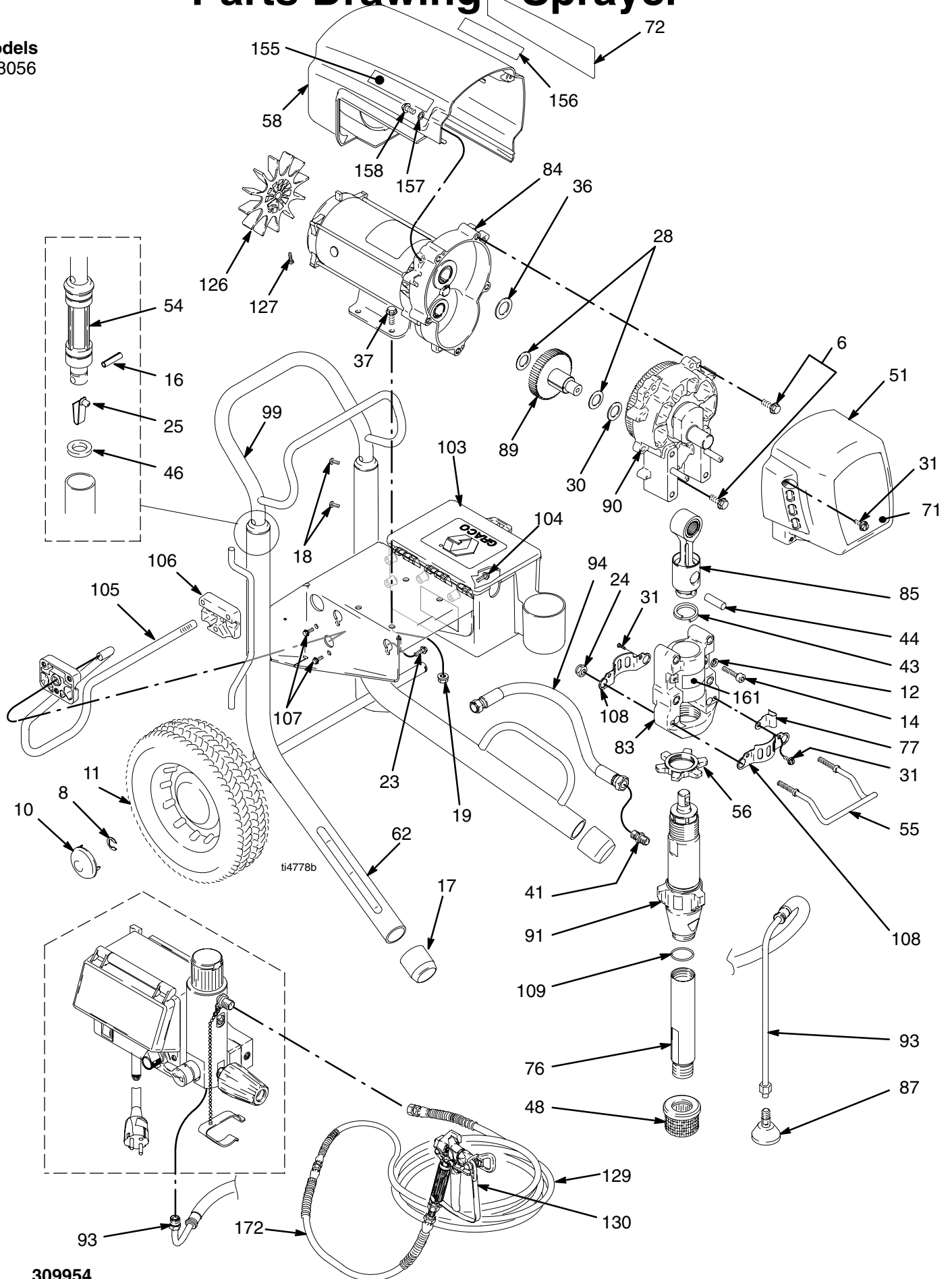
Ultra Max 695: 248052, B

Ultra Max 795: 248054, B

Ref .	Part No.	Description	Qty	Ref	Part No.	Description	Qty
6	15C753	SCREW, mach, torx, hex wash hd	5		15D069	795	1
8	101242	RING, retaining, ext.	2	76	248214	TUBE, intake; includes 109	1
10	104811	CAP, hub	2	77	197124	CLIP, spring	1
11	106062	WHEEL, semi pneumatic	2	79	206994	FLUID, TSL, 8 oz (not shown)	1
12	106115	WASHER, lock spring (hi-collar)	4	83	240523	HOUSING, bearing; includes 24, 55	1
14	110141	SCREW, cap, socket hd	4	84		MOTOR, electric; includes 126, 127	
16	101354	PIN, spring straight	2		287197	695	1
17	15C871	CAP, leg	2		287198	795	1
18	109032	SCREW, mach, pnh	4	85	241008	ROD, connecting; includes 43	1
19	110996	NUT, hex, flanged	4	87	241920	DEFLECTOR, threaded	1
23	110963	SCREW, cap, flng hd	2	89	287289	GEAR, combination; includes 28, 30	1
24	112746	NUT, hex	2	90		HOUSING, drive; includes 6, 36, 90a	
25	112827	BUTTON, snap	2		287283	695	1
28	114672	WASHER, thrust	2		287284	795	1
30	114699	WASHER, thrust	1	90a	107089	WASHER, thrust	1
31	118444	SCREW, mach hex washer head	5	91	248204	PUMP, displacement	1
36	116191	WASHER, thrust	1			Manual 310643	
37	100057	SCREW, hex hd	4	93	248217	HOSE, coupled; includes 87	1
41	162453	NIPPLE, (1/4 npsm x 1/4 npt)	1	94	15D049	HOSE	1
43	176817	SPRING, retaining	1	99	245245	HANDLE, cart	1
44	176818	PIN, str, hdls	1	103	287253	TOOL BOX; includes 104	1
46	183350	WASHER	2	104	118852	SCREW, hex washer hd	3
48	189920	STRAINER, (1-11 1/2 npsm)	1	105	15D281	HANGER, stand, cart	1
51	287291	COVER, drive, painted	1	106	15C982	CAM, cart	2
		includes 31, 157, 158		107	114531	SCREW, flange, hex	4
54	192027	SLEEVE, cart	2	108	15C859	SHIELD, pump rod	1
55	192719	HANGER, pail	1	109	118494	O-RING	1
56	192723	NUT, retaining	1	126	15D088	FAN, motor	1
58		SHIELD, motor, painted;		127	115477	SCREW, mach, torx pan hd	1
		includes 157, 158		128▲	222385	TAG, WARNING (not shown)	1
	287281	695	1	129	240794	HOSE, cpld, 1/4 in. x 50 ft	1
	287282	795	1	130	246233	GUN, FTx-A	1
62	287165	FRAME, cart	1			Manual 309640	
71		LABEL, front		157	276980	GROMMET	2
	15D065	695	1	158	119250	SCREW, shoulder	2
	15D068	795	1	161	187436	LABEL, torque	1
72		LABEL, side		172	238358	HOSE, cpld, 3/16 in. x 3 ft	1
	15D066	695	1	▲	Extra Danger and Warning tags and labels available free.		

Parts Drawing - Sprayer

Models
248056



Parts List - Sprayer

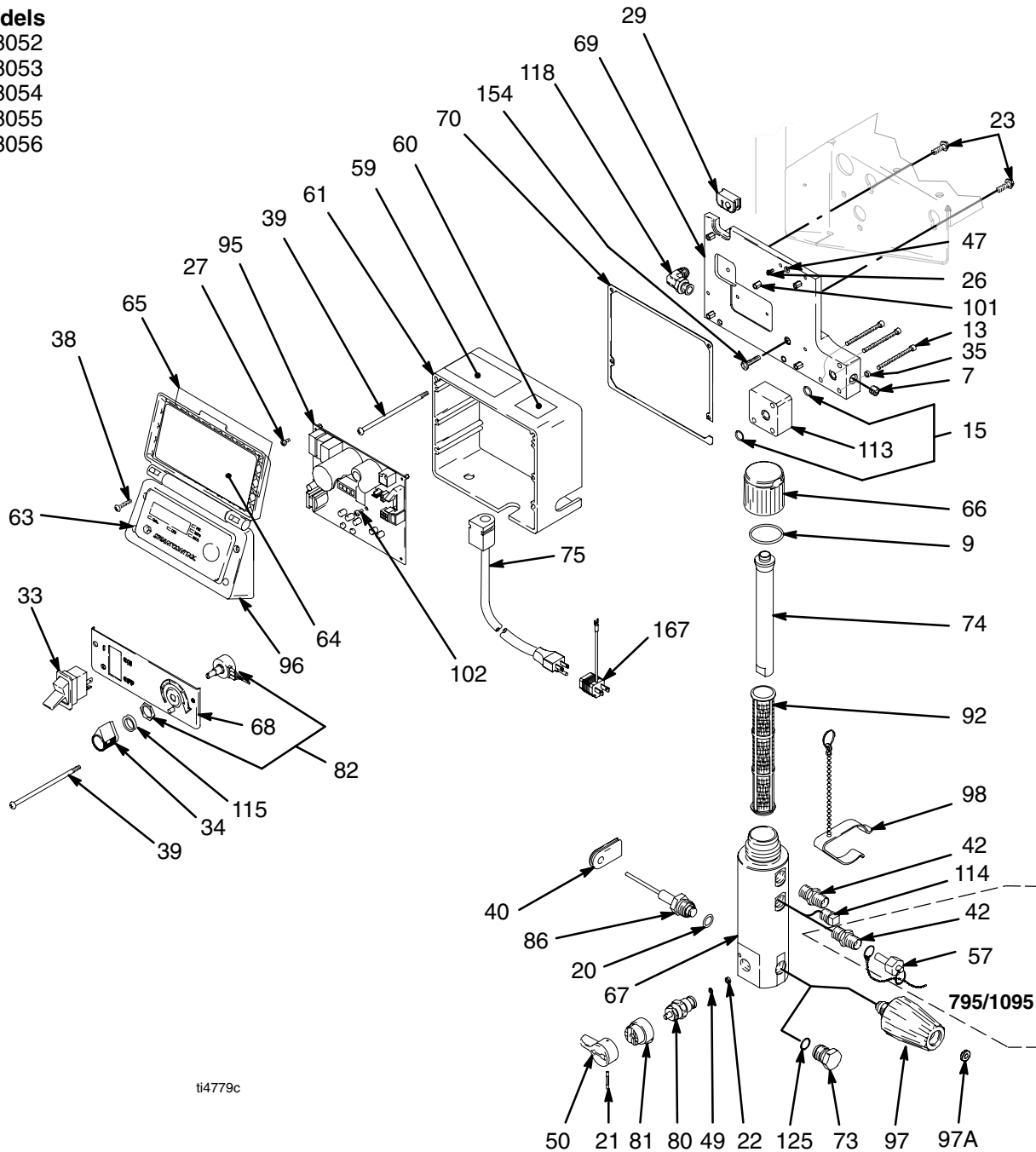
Ultra Max 1095: 248056, B

Ref .	Part No.	Description	Qty	Ref	Part No.	Description	Qty
6	15C753	SCREW, mach, torx, hex wash hd	5	76	248215	TUBE, intake; includes 109	1
8	101242	RING, retaining, ext.	2	77	197124	CLIP, spring	1
10	104811	CAP, hub	2	79	206994	FLUID, TSL, 8 oz (not shown)	1
11	179811	WHEEL, semi pneumatic	2	83	241015	HOUSING, bearing; includes 24, 55	1
12	106115	WASHER, lock spring (hi-collar)	4	84	287199	MOTOR, electric; includes 126, 127	1
14	114666	SCREW, cap, socket hd	4	85	241279	ROD, connecting; includes 43	1
16	108068	PIN, spring straight	2	87	241920	DEFLECTOR, threaded	1
17	276974	CAP, leg	2	89	287290	GEAR, combination; includes 28, 30	1
18	108795	SCREW, mach, pnh	4	90	287294	HOUSING, drive; includes 6, 36	1
19	110996	NUT, hex, flanged	4	91	248205	PUMP, displacement	1
23	110963	SCREW, cap, flng hd	2			Manual 310643	
24	112746	NUT, hex	2	93	248217	HOSE, coupled; includes 87	1
25	112827	BUTTON, snap	2	94	15D360	HOSE	1
28	114672	WASHER, thrust	2	99	245245	HANDLE, cart	1
30	114699	WASHER, thrust	1	103	287253	TOOL BOX; includes 104	1
31	118444	SCREW, mach hex washer head	5	104	118852	SCREW, hex washer hd	3
36	116192	WASHER, thrust	1	105	15C858	HANGER, stand, cart	1
37	100057	SCREW, hex hd	4	106	15C982	CAM, cart	2
41	162485	NIPPLE, (3/8 npsm x 3/8 npt)	1	107	114531	SCREW, flange, hex	4
43	183169	SPRING, retaining	1	108	15C762	SHIELD, pump rod	2
44	183210	PIN, str, hdls	1	109	118494	O-RING	1
46	183350	WASHER	2	126	15D088	FAN, motor	1
48	189920	STRAINER, (1-11 1/2 npsm)	1	127	115477	SCREW, mach, torx pan hd	1
51	287292	COVER, drive, painted	1	128▲	222385	TAG, WARNING (not shown)	1
		includes 157, 158		129	240794	HOSE, cpd, 1/4 in. x 50 ft	1
54	191084	SLEEVE, cart	2	130	246233	GUN, FTx-E	1
55	192719	HANGER, pail	1			Manual 309640	
56	193031	NUT, retaining	1	157	276980	GROMMET	2
58	287282	SHIELD, motor, painted;	1	158	119250	SCREW, shoulder	2
		includes 157, 158		161	187437	LABEL, torque	1
62	287207	FRAME, cart	1	172	238358	HOSE, cpd, 3/16 in. x 3 ft	1
71	15D071	LABEL, front	1	▲ Extra Danger and Warning tags and labels available free.			
72	15D072	LABEL, side	1				

Parts Drawing - Sprayer

Models

248052
248053
248054
248055
248056



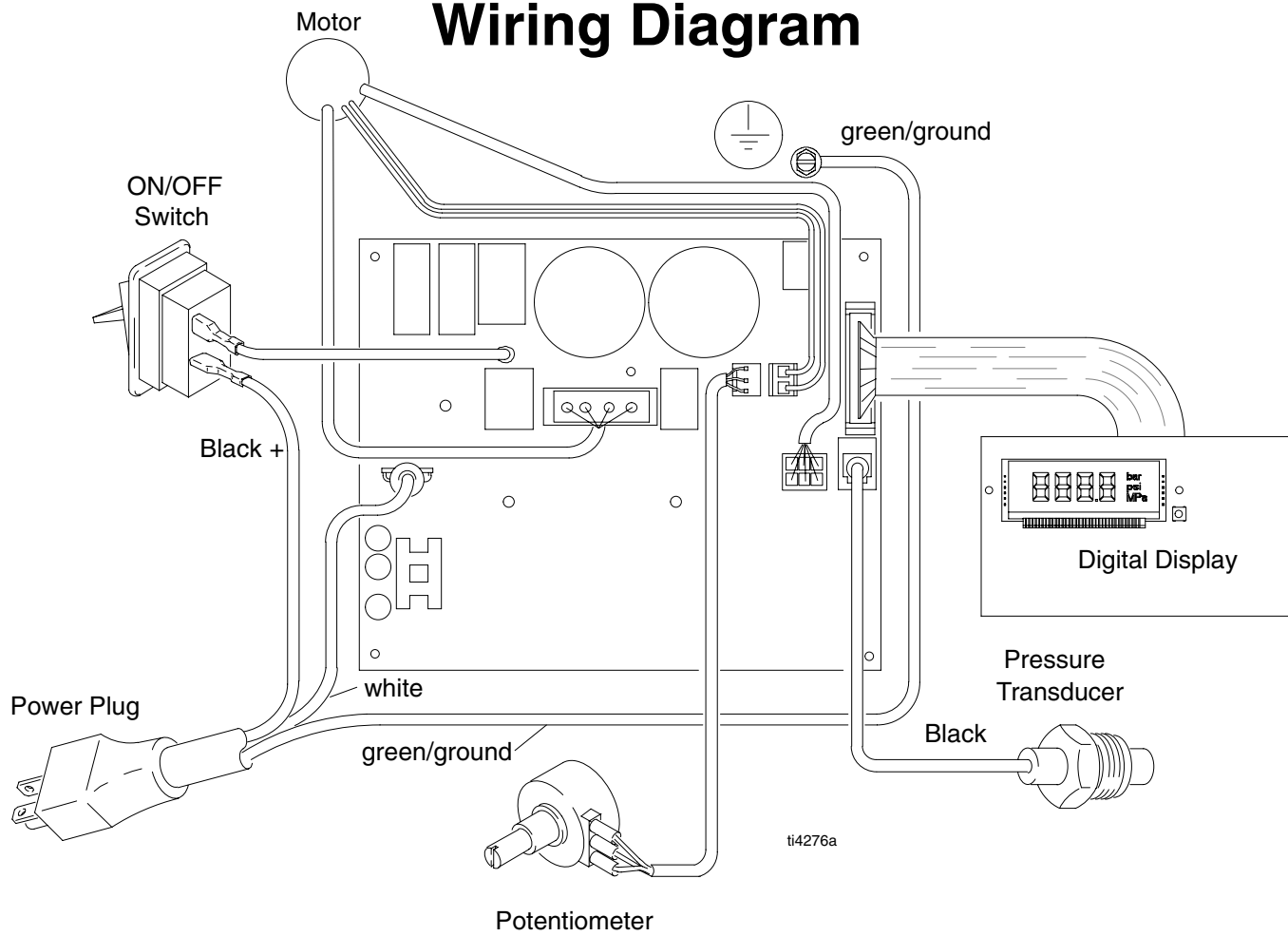
ti4779c

Parts List - Sprayer

Ultra Max II 695/795/1095

REF NO.	PART NO.	DESCRIPTION	QTY	REF NO.	PART NO.	DESCRIPTION	QTY
7	100721	PLUG, pipe	1	70	15D036	GASKET, control box	1
9	117285	O-RING	1	73	248314	PLUG, AutoClean, includes 125	1
13	C19817	SCREW, cap, socket hd	3	74	15C766	TUBE, diffusion	1
15	107505	O-RING	2	75	15D029	CORD, power	1
20	111457	O-RING	1	80	235014	VALVE, drain; includes 22, 49	1
21	15C972	PIN, grooved	1	81	224807	BASE, valve	1
22	111699	GASKET, seat, valve	1	82	236352	POTENTIOMETER, adj, pressure	1
23	110963	SCREW, cap, flg hd	2	86	243222	TRANSDUCER, press ctrl; includes 20	1
26	114391	SCREW, grounding	1	92		FILTER, fluid	
27	113045	SCREW, sems, mach, phil truss	5		244071	30 mesh	1
29	15D087	GROMMET	1		244067	60 mesh, original equipment	1
33	15C979	SWITCH, rocker	1		244068	100 mesh	1
34	116167	KNOB, potentiometer	1		244069	200 mesh	1
35	105510	WASHER, lock, spring (hi-collar)	3	95	287378	Kit, CONTROL, bd, 120V; includes 27, 102	1
38	116252	SCREW, #8 taptite phil	4				
39	112381	SCREW, mach, pan hd	4	96	287286	COVER, control includes 38, 63, 64, 65	1
40	15D033	GROMMET, transducer	1				
42		ADAPTER		97	287293	VALVE, AutoClean; includes 97a	1
	164672	695	1	97a	15F950	GASKET	1
	164672	795/1095	2	98	244346	KIT, repair, clamp, trigger	1
47	186620	LABEL, symbol, ground	1	101	15D160	STUD, board	5
49	187615	SEAT, valve	1	102	114420	SCREW, mach, pnh, sems	3
50	15C780	HANDLE, valve, drain	1	113	15F844	SPACER, filter, base	1
57	240131	STEM, plug, packless	1	114	104813	PLUG, pipe	1
59▲	15D524	LABEL, DANGER	1	115	15C973	GASKET	1
60▲	195792	LABEL, WARNING	1	118		FITTING, elbow, hydraulic	1
61	15C854	BOX, control	1		116793	695, 795	1
63	198648	LABEL, LCD	1		118896	1095	1
64	15D063	LABEL, instruction	1	125	15D541	GASKET	1
65	196670	LABEL, cover, control box	1	150	242001	CORD, power, CEE/7	1
66	287285	CAP, filter; includes 9, 74	1	151	287121	CORD, power, Multi-cord	1
67	15C838	BASE, filter	1	152	195551	RETAINER, plug	1
68	15C947	PANEL, control	1	154	115478	SCREW, Torx, pan hd	1
69	15C840	PLATE, power bar	1	167	244285	ADAPTER, cord	1

Wiring Diagram



[illegible]

Graco Standard Warranty

Graco warrants all equipment manufactured by Graco and bearing its name to be free from defects in material and workmanship on the date of sale by an authorized Graco distributor to the original purchaser for use. With the exception of any special, extended, or limited warranty published by Graco, Graco will, for a period of twelve months from the date of sale, repair or replace any part of the equipment determined by Graco to be defective. This warranty applies only when the equipment is installed, operated and maintained in accordance with Graco's written recommendations.

This warranty does not cover, and Graco shall not be liable for general wear and tear, or any malfunction, damage or wear caused by faulty installation, misapplication, abrasion, corrosion, inadequate or improper maintenance, negligence, accident, tampering, or substitution of non-Graco component parts. Nor shall Graco be liable for malfunction, damage or wear caused by the incompatibility of Graco equipment with structures, accessories, equipment or materials not supplied by Graco, or the improper design, manufacture, installation, operation or maintenance of structures, accessories, equipment or materials not supplied by Graco.

This warranty is conditioned upon the prepaid return of the equipment claimed to be defective to an authorized Graco distributor for verification of the claimed defect. If the claimed defect is verified, Graco will repair or replace free of charge any defective parts. The equipment will be returned to the original purchaser transportation prepaid. If inspection of the equipment does not disclose any defect in material or workmanship, repairs will be made at a reasonable charge, which charges may include the costs of parts, labor, and transportation.

THIS WARRANTY IS EXCLUSIVE, AND IS IN LIEU OF ANY OTHER WARRANTIES, EXPRESS OR IMPLIED, INCLUDING BUT NOT LIMITED TO WARRANTY OF MERCHANTABILITY OR WARRANTY OF FITNESS FOR A PARTICULAR PURPOSE.

Graco's sole obligation and buyer's sole remedy for any breach of warranty shall be as set forth above. The buyer agrees that no other remedy (including, but not limited to, incidental or consequential damages for lost profits, lost sales, injury to person or property, or any other incidental or consequential loss) shall be available. Any action for breach of warranty must be brought within two (2) years of the date of sale.

Graco makes no warranty, and disclaims all implied warranties of merchantability and fitness for a particular purpose in connection with accessories, equipment, materials or components sold but not manufactured by Graco. These items sold, but not manufactured by Graco (such as electric motors, switches, hose, etc.), are subject to the warranty, if any, of their manufacturer. Graco will provide purchaser with reasonable assistance in making any claim for breach of these warranties.

In no event will Graco be liable for indirect, incidental, special or consequential damages resulting from Graco supplying equipment hereunder, or the furnishing, performance, or use of any products or other goods sold hereto, whether due to a breach of contract, breach of warranty, the negligence of Graco, or otherwise.

FOR GRACO CANADA CUSTOMERS

The parties acknowledge that they have required that the present document, as well as all documents, notices and legal proceedings entered into, given or instituted pursuant hereto or relating directly or indirectly hereto, be drawn up in English. Les parties reconnaissent avoir convenu que la rédaction du présente document sera en Anglais, ainsi que tous documents, avis et procédures judiciaires exécutés, donnés ou intentés à la suite de ou en rapport, directement ou indirectement, avec les procédures concernées.

TO PLACE AN ORDER OR FOR SERVICE, contact your Graco distributor, or call this number to identify the distributor near you: **1-800-690-2894 Toll Free**

All written and visual data contained in this document reflects the latest product information available at the time of publication. Graco reserves the right to make changes at any time without notice.

Graco Headquarters: Minneapolis
International Offices: Belgium, China, Japan, Korea

GRACO INC. P.O. BOX 1441 MINNEAPOLIS, MN 55440-1441

www.graco.com

PRINTED IN USA 309943
11/2003 Rev. 8/2005