



Electric Sprayers

Graco's Complete Line of Professional Electric Airless Sprayers



PROVEN QUALITY. LEADING TECHNOLOGY.

There is nothing like a Graco® sprayer.

Quality. Performance. Durability. Productivity. Graco electric airless sprayers deliver on all counts. Whether you're a contractor focused on small residential or a large contractor tackling the biggest projects every day, Graco offers you the best, most extensive line of painting equipment to meet your needs. Most importantly, when you choose Graco, you know that you are choosing the highest quality product in the industry. You can take pride in the fact that Graco professional electric sprayers are designed, manufactured, and assembled right here in the United States of America. *We do!*



What is the G4 Difference? Simply put, it's Graco's commitment to provide you with the very best electric airless sprayers, backed by a solid reputation for proven quality, maximum performance, reliable warranty coverage and unmatched on-the-job productivity. Graco sprayers are designed to exceed the professional painting contractor's standards for quality and performance. Graco is the name to turn to today and as your business grows.

PROVEN **QUALITY**

100% factory-tested and field-proven design, coupled with cutting-edge technology, keep Graco sprayers performing reliably on the job for years.

MAXIMUM **PERFORMANCE**

Higher output with superior control ensures the highest quality finish for every job.

INDUSTRY-LEADING **WARRANTY**

Every Graco electric sprayer is backed by our full warranty coverage and more than 80 years of proven commitment to the professional contractor.

UNMATCHED **PRODUCTIVITY**

Exclusive Endurance™ pumps deliver long life and reliable performance, while the Endurance Advantage and Endurance Now Programs eliminates downtime by enabling you to always have a spare pump on hand for quick job site change-out.

AMERICAN BUILT QUALITY SINCE 1926.

Products Include Patented and Patent Pending Technologies

Graco: A World Leader in Electric Airless Sprayers

For the contractor or painting professional, nothing surpasses the ease of use and reliability of a Graco electric airless sprayer. Durable and powerful, yet easy to maintain, electric airless sprayers deliver the production rate and performance professionals demand. And as a world leader in fluid handling technology, Graco builds the very best, most reliable electric airless sprayers available. When compared to other technologies, it's easy to see why you should choose a Graco sprayer.



“There is nothing more satisfying than building a high quality product in the USA for hardworking professional painters.”

– Jill Haubenschild, CED Cell Manager, Rogers, MN USA



PAINTING SOLUTIONS GUIDE

Choose the RIGHT ELECTRIC SPRAYER

Whether you're a contractor who specializes in small residential and repainting jobs or a painting professional who routinely handles large residential, commercial, or industrial work, you need to know that your sprayer will deliver the performance you need to get the job done. Graco airless sprayers provide that performance, and our mission is to fit you to the ideal sprayer that's sized for the work you do.

Use the Painting Solutions Guide below to help you choose which of Graco's electric sprayers is right for you.

CLASSIFICATION	SMALL ELECTRICS	MIDSIZE ELECTRICS
SPRAYER MODEL	390™ PC Ultra® 395 PC	Ultra Max II 490 PC Pro Ultra Max II 495 PC Pro Ultra Max II 595 PC Pro
PRODUCTION RATE	Low: up to 50 gallons per week 1 gun up to 0.023 tip up to 0.54 gpm up to 200 ft of hose	Medium: 50–100 gallons per week 1 gun up to 0.027 tip up to 0.70 gpm up to 200 ft of hose
TYPICAL MATERIALS	Light Lacquers and Stains Interior/Exterior Latex Enamels • Acrylics	Light—Medium Lacquers and Stains Interior/Exterior Latex Enamels • Acrylics • Oil-Based Primers
TYPICAL JOBS	Small Residential • Repaint/Remodel Property Maintenance	Medium Residential • Repaint/Remodel Property Maintenance • Light Commercial
	See pg. 5 for our full line of Small Electric Sprayers	See pg. 9 for our full line of Midsize Electric Sprayers







- What types of materials do you spray? In the future?
- How many gallons per week will you spray?
- How many guns do you need now? In the future?
- What tip sizes do you need?
- What hose lengths will you use?
- Will most jobs be indoors or outdoors?

ERICS

LARGE ELECTRICS

	Ultra Max II 695 Ultra Max II 795	Ultra Max II 1095 Ultra Max II 1595
	High: 100 – 200 gallons per week up to 2 guns up to 0.033 tip up to 1.10 gpm up to 300 ft of hose	Highest: over 200 gallons per week up to 3 guns up to 0.039 tip up to 1.35 gpm up to 300 ft of hose
ners	Full Range: Light—Heavy Interior/Exterior Latex • Oil-Based Primers Acrylics • Block Fillers	Heavy Interior/Exterior Latex • Oil-Based Primers Epoxies • Block Fillers Dryfall • Elastomerics
el rcial	Interior/Exterior • Residential • Light Commercial	Exterior Residential • Heavy Commercial • Industrial
	See pg. 14 for our full line of Large Electric Sprayers	
		

Graco Small Electric Sprayers

Proven quality and unmatched reliability

Just because a sprayer is small in size doesn't mean that it's small in capability. Built with many of the same features as Graco's large electric sprayers, these units are built to deliver the power and performance you need to get the job done.

Small Electrics

Endurance™ Pump

- ▶ The most reliable pump on the market—lasts 2 times longer than the next leading brand
- ▶ Long-life V-Max Blue™ packings, Chromex™ rod and hardened stainless steel cylinder
- ▶ QuikAccess™ intake valve for fast cleaning or debris clearing

Easy Out™ Pump Filter

- ▶ Vertical design helps eliminate spills
- ▶ Filters from the inside out and won't collapse
- ▶ Large 7.8 square inch filtering area reduces tip clogs
- ▶ Flow-through design cleans with only a few gallons

Durable DC Motor

- ▶ DC Motors are more forgiving to voltage fluctuations allowing them to run on longer cords

Advantage Drive™

- ▶ Hardened steel gears run extremely quiet
- ▶ High ratio reduction provides slow pump stroking that reduces wear and extends pump life

Rugged, Durable Frame

- ▶ Thick chrome over steel withstands rugged environments
- ▶ Heavy-duty handles and semi-pneumatic wheels roll easily over rough terrain
- ▶ 4-leg stand is more stable

Ready to Work

- ▶ Professional grade hose, gun, tip and throat seal liquid included
- ▶ Lighted plug verifies power



Stand model

SmartControl™ 1.0 (395 model only)

- ▶ Delivers a consistent spray fan without pressure fluctuation at all spraying pressures
- ▶ Ideal for FF LP tips commonly used for fine finish work and low overspray applications



Finish Every Job, Every Day with Graco's ProConnect™ and Endurance Now™ program



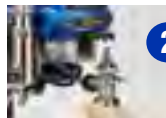
ProConnect

- ▶ **Fast and Easy** on-the-job Pump Replacement System
- ▶ Available on small and midsize electric sprayers

Being able to quickly change a pump on the job site can be the difference between a productive day of spraying and one spent waiting on replacement parts or behind the wheel taking your sprayer to be serviced. Thanks to the ProConnect™ Pump Removal System, Graco makes pump swaps fast and easy. In three simple steps, you can remove the pump on Graco's small and midsize electric sprayers. No more time wasted or money lost to labor charges on pump repairs—with a spare pump at the ready, you'll never have a down day.



Loosen the clamping nut



Open door and remove pump



Remove hose and suction tube

Fast Pump Removal

- ▶ 1-minute jobsite replacement
- ▶ Keeps you spraying instead of waiting for service
- ▶ No pins or parts to lose!

Graco has the One-Part Solution to Keep You Spraying!

Whether you need the longest life Endurance Pump for medium-to-heavy use or the Express Pump for lighter use, Graco's Pump Replacement System provides the only one-part pump replacement solution on the market today. Pick up a spare and keep spraying!

- ▶ **Eliminate Downtime**
- ▶ **Replace Pump "On-the-Job"**
- ▶ **Pick Up a Spare Today!**



Small Electrics

390 PC

DESCRIPTION	PART #
STAND	17C310
HI-BOY	17C313

SPECIFICATIONS

MAX TIP SIZE:	0.021
MAX GPM (LPM):	0.47 (1.8)
MAX PSI (BAR):	3300 (227)
MOTOR HP:	5/8 DC

INCLUDES

- FTx™ Gun
- RAC X™ 515 SwitchTip™ and Guard
- 1/4 in x 50 ft (6.4 mm x 15 m) BlueMax™ II Airless Hose
- Endurance Pump

If you need a solid workhorse of a sprayer that is built for the professional who is just “starting out,” then the 390 PC is for you. This is Graco’s lightest professional sprayer, ideal for residential jobs.

Easy Out Pump Filter creates less mess during changing or cleaning. Its flow-through design cleans with less fluid.

Advantage Drive runs quiet and has a lifetime guarantee.

Chromed Steel Frame has stable 4-leg design with cord wrap.

*Stand model shown.
Hi-Boy model also available.*

Features

PRO CONNECT

Swivel Inlet Suction Hose easily reaches paint buckets.

QuikAccess™ intake valve quickly removes for easy cleaning or accessing the inlet ball.



Lightweight Design weighs only 30 lbs (13.6 kg) with offset handle positioned to kick sprayer away from leg for comfortable carrying.

Variable Pressure Adjustment
Position indicator allows repeatable setting while spraying light-to-heavier materials.

Ultra[®] Max II 395 PC

The **Ultra 395 PC's** performance and versatility has made it Graco's most popular small electric sprayer. It features SmartControl™ 1.0 pressure control that delivers a consistent spray fan without pressure fluctuation at all spraying pressures. Proven technology and reliability make it perfect for professionals who spray daily with a wide range of coatings.

Totally Enclosed DC Motor suitable for use with solvent-based finishes.

DESCRIPTION	PART #
STAND	17C314
HI-BOY	17C317
LO-BOY	17C315

SPECIFICATIONS

MAX TIP SIZE:	0.023
MAX GPM (LPM):	0.54 (2.0)
MAX PSI (BAR):	3300 (227)
MOTOR HP:	7/8 TEFC DC

INCLUDES

- Contractor™ Gun
- RAC X 517 SwitchTip and Guard
- 1/4 in x 50 ft (6.4 mm x 15 m) BlueMax™ II Airless Hose
- Endurance Pump



Features

PRO CONNECT

Smart Control 1.0 with variable speed control delivers consistent spray fan without pressure fluctuations at all spraying pressures.

*Stand model shown.
Lo-Boy and Hi-Boy models
also available.*

Durable Cart Designs

withstands rugged environments; Hi-Boy cart design allows for easy one-person bucket changes, while retractable handle doubles as hose storage.



Compatible with 1.5 gallon hopper for small projects.

Lo-Boy has convenient bucket hook to allow easy movement on the job without spilling.

Graco Midsize Electric Sprayers

Increased performance, advanced technology

When you need the increased productivity to handle medium residential and light commercial spraying jobs, Graco's Midsize electric airless sprayers deliver the performance you demand. With features that make it easier to get more work done in a day, these sprayers provide increased flow and production rates over our small electric sprayers.

Midsize Electrics

SmartControl 2.5

- ▶ Ideal for FF LP tips commonly used for fine finish work and low overspray applications
- ▶ Digital display shows pressure, gallons, and hours
- ▶ Provides error messages and diagnostics
- ▶ Aids in fleet management

Fast Flush



Fast Flush™

- ▶ FastFlush high flow cleaning system runs faster and dramatically reduces cleaning time

MaxPower Motor

- ▶ Graco's compact and powerful brushless DC motors are designed to produce the most power possible for all painting applications
- ▶ Higher torque = More work done
- ▶ Totally enclosed, fan-cooled design protects the internal components of the motor from dirt, dust and overspray
- ▶ Brushless design means that you will never need to replace brushes
- ▶ DC motors are more forgiving to voltage fluctuation allowing them to run on longer power cords
- ▶ Lifetime warranty

Endurance Pump

- ▶ The most reliable pump on the market—lasts 2 times longer than the next leading brand
- ▶ Long-life V-Max Blue™ packings, Chromex™ rod and hardened stainless steel cylinder
- ▶ QuikAccess™ intake valve for fast cleaning or debris clearing



Stand model

Easy Out™ Pump Filter

- ▶ Vertical design helps eliminate spills
- ▶ Filters from the inside out and won't collapse
- ▶ Large 7.8 square inch filtering area reduces tip clogs
- ▶ Flow-through design cleans with only a few gallons

Advantage Drive™

- ▶ Hardened steel gears run extremely quiet
- ▶ High ratio reduction provides slow pump stroking that reduces wear and extends pump life

Ready to Work

- ▶ Professional grade hose, gun, tip and throat seal liquid included
- ▶ Lighted plug verifies power
(595 PC Pro model excluded)

Finish Every Job, Every Day with Graco's ProConnect™ and Endurance Now™ program



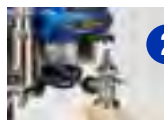
ProConnect

- ▶ **Fast and Easy** on-the-job Pump Replacement System
- ▶ Available on small and midsize electric sprayers

Being able to quickly change a pump on the job site can be the difference between a productive day of spraying and one spent waiting on replacement parts or behind the wheel taking your sprayer to be serviced. Thanks to the ProConnect™ Pump Removal System, Graco makes pump swaps fast and easy. In three simple steps, you can remove the pump on Graco's small and midsize electric sprayers. No more time wasted or money lost to labor charges on pump repairs—with a spare pump at the ready, you'll never have a down day.



Loosen the clamping nut



Open door and remove pump



Remove hose and suction tube

Fast Pump Removal

- ▶ 1-minute jobsite replacement
- ▶ Keeps you spraying instead of waiting for service
- ▶ No pins or parts to lose!

Graco has the One-Part Solution to Keep You Spraying!

Whether you need the longest life Endurance Pump for medium-to-heavy use or the Express Pump for lighter use, Graco's Pump Replacement System provides the only one-part pump replacement solution on the market today. Pick up a spare and keep spraying!

- ▶ **Eliminate Downtime**
- ▶ **Replace Pump "On-the-Job"**
- ▶ **Pick Up a Spare Today!**



Midsize Electrics

Ultra Max II 490 PC Pro

DESCRIPTION	PART #
STAND	17C327
HI-BOY	17C332
LO-BOY	17C328

SPECIFICATIONS

MAX TIP SIZE:	0.023
MAX GPM (LPM):	0.54 (2.0)
MAX PSI (BAR):	3300 (227)
MOTOR HP:	1.0 Brushless DC

INCLUDES

- Contractor™ Gun
- RAC X 517 SwitchTip and Guard
- 1/4 in x 50 ft (6.4 mm x 15 m) BlueMax™ II Airless Hose
- Endurance Pump

The **Ultra Max II 490 PC Pro** sprayer is the ideal step-up for professionals looking for superior performance and features in a small electric sprayer.

MaxPower brushless DC motor creates more torque and delivers maintenance-free performance.

Features

PRO CONNECT

*Stand model shown.
Lo-Boy and Hi-Boy models
also available.*



Smart Control 2.5 advanced pressure control system delivers consistent spray fan without pressure fluctuations at all spraying pressures.

Digital Display for quick readings of pressure, gallon, hours, diagnostics and error messages. Ideal for maintenance tracking.

FastFlush™ cleaning system saves time with high speed cleaning.



Ultra Max II 495 PC Pro

The **Ultra Max II 495 PC Pro** brings the leading technology and performance of Graco's larger Ultra Max II models into a compact and lightweight design.



Features



*Lo-Boy model shown.
Stand and Hi-Boy
models also available.*

The **Ultra Max II 595 PC Pro** sprayer is the ideal choice for the painting professional who needs the highest possible output from a small, portable unit.

Features



Kickstand on Hi-boy models holds inlet clear of the bucket for easy one-person bucket changes.

Suitable for Wide RAC® tips.

Long Stroke Pump reduces wear and extends time between repacks.

*Hi-Boy model shown.
Lo-Boy model also available.*



DESCRIPTION	PART #
STAND	17C333
HI-BOY	17C335
LO-BOY	17C334

SPECIFICATIONS	
MAX TIP SIZE:	0.025
MAX GPM (LPM):	0.60 (2.3)
MAX PSI (BAR):	3300 (227)
MOTOR HP:	1.2 Brushless DC

- INCLUDES**
- Contractor Gun
 - RAC X 517 SwitchTip and Guard
 - 1/4 in x 50 ft (6.4 mm x 15 m) BlueMax™ II Airless Hose
 - Endurance Pump

Ultra Max II 595 PC Pro

DESCRIPTION	PART #
HI-BOY	17C337
LO-BOY	17C336

SPECIFICATIONS	
MAX TIP SIZE:	0.027
MAX GPM (LPM):	0.70 (2.6)
MAX PSI (BAR):	3300 (227)
MOTOR HP:	1.6 Brushless DC

- INCLUDES**
- Contractor Gun
 - RAC X 517 SwitchTip and Guard
 - 1/4 in x 50 ft (6.4 mm x 15 m) BlueMax™ II Airless Hose
 - Endurance Pump

Graco Large Electric Sprayers

Power + performance for the most demanding jobs

Graco's large electric sprayers have long been the choice for larger professional contractors who need the highest production rates. These sprayers handle the most demanding applications and the toughest jobs with ease, and consistently deliver the performance you expect from a Graco sprayer. Unmatched productivity, maximum performance and proven quality—expect nothing less from a Graco large electric airless sprayer!

Large Electrics

Endurance Pump

Delivering the performance

- ▶ At the heart of every Graco electric airless sprayer is the Endurance pump, the most rugged and reliable pump on the market today, lasting twice as long as the next leading brand
- ▶ High-density polyethylene V-Max Blue packings are more efficient, withstand heat better, and deliver more spraying performance
- ▶ Extremely hard Chromex rod and stainless steel sleeve delivers more performance by resisting abrasion from material
- ▶ Knock-off foot valve allows for quick access to the inlet ball for fast clearing of debris



ProGuard Technology

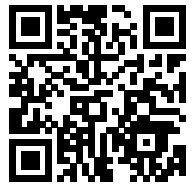
Protecting the power

Graco's exclusive ProGuard Sprayer Protection System constantly monitors incoming electricity and protects the unit from electrical damage due to bad or extreme jobsite power conditions.

- ▶ Protects all electrical components from power spikes or from overheating due to low voltage conditions
- ▶ Acts as a surge protector in the event of over-voltage situations
- ▶ No fuses to replace—just flip the switch to reset



Choose the **RIGHT SERIES** of large electric sprayers for all your painting applications.



m.graco.com/cedseriesvid

Only Graco goes beyond motor size and offers three different series of large electric airless sprayers that have features designed to make your work easier, faster and more productive.

Whether you need the everyday reliability of our **Standard Series**, the increased speed and productivity of the **ProContractor Series**, or extreme ruggedness of the **IronMan Series**, Graco offers the perfect sprayer that's designed specifically for you.

If You're a **Small Residential and Repainting Contractor**

- ▶ You're painting multiple days a week
- ▶ Your jobs are typically on the smaller side
- ▶ You demand everyday reliability
- ▶ You don't need a lot of extra features



You need a **Standard Series** sprayer.

EVERYDAY RELIABILITY

If You're a **Large Residential and Commercial Contractor**

- ▶ You're painting every day
- ▶ You tackle medium to large projects
- ▶ You're moving frequently from job to job
- ▶ You need features that save you time and get you in, out, and on to the next jobsite



You need a **ProContractor Series** sprayer.

WORK SMARTER, FINISH MORE JOBS

If You're a **Large Commercial and Industrial Contractor**

- ▶ You're painting continuously in less-than-ideal conditions
- ▶ You handle large, long-duration projects that require large volumes of material
- ▶ You keep your equipment on-site in paint
- ▶ You require extreme durability and reliability



You need an **IronMan Series** sprayer.

BEYOND JOBSITE TOUGH

Standard Series

EVERYDAY RELIABILITY

When you're tackling larger painting projects multiple days a week, you demand reliability. Graco's Standard Series sprayers deliver durability and performance time after time. They handle the widest range of tip sizes, longer hose lengths and heavier coatings with ease.

All Standard Series sprayers come with these "Only On A Graco" features:



MaxPower Motor Graco's compact and powerful MaxPower brushless DC motors are designed to produce the most power possible for all painting applications.

- ▶ Higher torque = More work done
- ▶ Totally enclosed, fan-cooled design protects the internal components of the motor from dirt, dust and overspray
- ▶ Brushless design means that you will never need to replace brushes
- ▶ Lifetime warranty



SmartControl 3.0 Graco's advanced SmartControl 3.0 offers precision pressure control that delivers a consistent spray fan without pressure fluctuations.

- ▶ Lowest dead band at any pressure
- ▶ Ideal for FF LP tips commonly used for fine finish work and low overspray applications
- ▶ ProGuard™ Sprayer Protection System guards against bad or extreme jobsite power conditions

SMARTCONTROL™

Rugged, Durable Cart Design With a Graco sprayer, it's not just the mechanical parts that are built to last. Our carts are built to deliver years of performance.

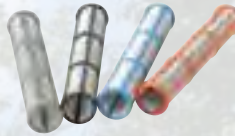
- ▶ Thick chrome over steel withstands rugged environments
- ▶ Full pneumatic wheels absorb impacts and vibrations
- ▶ Retractable handle doubles as coiled hose storage
- ▶ Hi-Boy TiltBack kickstand cart design holds the inlet clear of the paint bucket for easy one-person bucket changes





Easy Out™ Pump Filter The Easy Out pump filter is designed to filter from the inside out so filters won't get stuck or collapse when filled with dirt or debris.

- ▶ Large 19.5 square inch filtering area reduces tip clogs and ensures a quality finish
- ▶ Vertical filter removes with the cap for less mess



Advantage Drive™ The drive is the critical link between the motor and the pump. Graco doesn't leave the manufacturing of our Advantage Drive System to others; rather, we design and manufacture them at our world-class manufacturing facility in the United States.

- ▶ Hardened steel gears run extremely quiet
- ▶ The most durable, longest lasting drive in the industry

Endurance Pump Graco's Endurance Pump is the most rugged and reliable pump on the market today.

- ▶ Long-life V-Max Blue packings
- ▶ Chromex™ rod and stainless steel sleeve deliver superior reliability and life



See page 27 for more information.

Ready To Work Everything you need to get spraying—Contractor™ gun, RAC X™ SwitchTip™, Throat Seal Liquid (TSL™) and 50 feet of BlueMax™ II hose is included.

Heavy-Duty Prime Valve Maintenance-free design withstands high-pressure dumping.

LARGE RESIDENTIAL AND COMMERCIAL

ProContractor Series

WORK SMARTER, FINISH MORE JOBS

When it comes to getting the most work done in a day, it's all about speed and high performance. And that's where Graco delivers. With features that enable you to work more efficiently, the ProContractor series of electric airless sprayers help you get in, out, and on to the next job site faster, saving you time and money.

ProContractor Series sprayers have all the Features of the Standard Series, *Plus!*



SmartControl 3.0 with LED Display Graco's advanced SmartControl 3.0 delivers a consistent spray fan without pressure fluctuations at all spraying pressures.

- ▶ Bright, easy-to-read LED display shows pressure read-out, job/lifetime/gallon counter and self-diagnostics
- ▶ ProGuard Sprayer Protection System guards against bad or extreme jobsite power conditions

WatchDog™ The WatchDog Pump Protection System automatically shuts down the pump when paint runs out or if the hose is damaged.

- ▶ Prevents dry pumping damage



FastFlush™ This high flow cleaning system runs faster and dramatically decreases cleaning time.

- ▶ Motor runs at super high speed
- ▶ Results in high flow and faster cleaning—up to **4X faster** using only half the water!

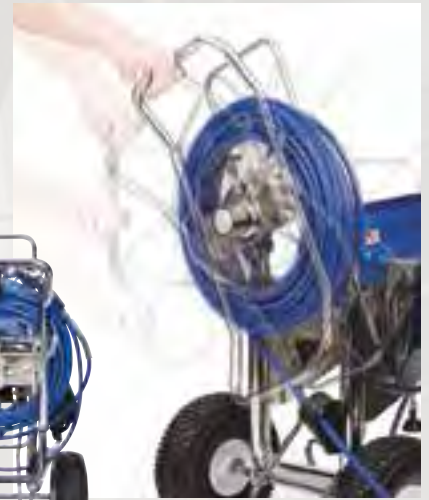
FastFlush



QuikReel™ With the integrated QuikReel you can deploy and rewind up to 300 feet of hose in seconds, letting you put the sprayer where you want it and the gun where you need it.



- ▶ Hose guide eliminates twisting, kinking, and coiling for one-person operation
- ▶ Hose is always connected and weight balanced to not tip over
- ▶ Use only the hose you need—the rest stays on the reel
- ▶ Hand crank folds away for storage and one man loading



On-Board Toolbox

Convenient storage container keeps tools, tips, filters and accessories where you need them most.



PRO CONNECT.2

ProConnect™ 2 This next-generation pinless design of Graco's ProConnect Pump Removal and Installation System makes it easier and faster than ever to replace the pump in seconds.

- ▶ Eliminates costly jobsite downtime
- ▶ Quickly and easily swap out the pump for a spare
- ▶ Pinless design needs no tools

Ready To Spray Everything you need—Contractor gun, RAC XSwitchTip, Throat Seal Liquid (TSL) and 100 feet of BlueMax II hose is already assembled and ready to use right out of the box, getting you working that much faster.

IronMan Series

BEYOND JOBSITE TOUGH

Power, Durability and Capability is what makes an IronMan. From its MaxLife pump to its rugged roll cage frame, IronMan airless sprayers are built for the serious contractor who routinely handles large commercial and industrial jobs.

IronMan Series sprayers have all the Features of the Standard Series, *Plus:*



SmartControl 3.0 with LED Display Graco's advanced SmartControl 3.0 delivers a consistent spray fan without pressure fluctuations at all spraying pressures.

- ▶ Bright, easy-to-read LED display shows pressure read-out, job/lifetime/gallon counter and self-diagnostics
- ▶ ProGuard Sprayer Protection System guards against bad or extreme jobsite power conditions

WatchDog™ The WatchDog Pump Protection System automatically shuts down the pump when paint runs out or if the hose is damaged.

- ▶ Prevents dry pumping damage



FastFlush This high flow cleaning system runs faster and dramatically decreases cleaning time.

- ▶ Motor runs at super high speed
- ▶ Results in high flow and faster cleaning—up to **4X faster** using only half the water!

FastFlush.



Extreme-Duty MaxLife® Pump Built for the most demanding jobs, Graco's Extreme-Duty MaxLife Pump delivers unmatched durability and life.

- ▶ Exclusive MaxLife sleeve and rod
- ▶ Lasts *6X longer* between repacks
- ▶ Oversized clearances ensure minimal pressure drop and increased performance
- ▶ Long-life ceramic and stainless steel balls included for maximum versatility no matter what you're spraying
- ▶ Crush-proof intake screen stands up to harsh impacts



PRO CONNECT 2



ProConnect 2 This next-generation pinless design of Graco's ProConnect Pump Removal and Installation System makes it easier and faster than ever to replace the pump in seconds.

- ▶ Eliminates costly jobsite downtime
- ▶ Quickly and easily swap out the pump for a spare
- ▶ Pinless design needs no tools

Roll Cage Frame Design

All IronMan sprayers are built for the most brutal and demanding job sites.

- ▶ Heavy-duty roll cage frame withstands the most extreme abuse from industrial job sites



Heavy-Duty Hose and Gun

100 feet of high-performance BlueMax II airless hose, a Silver Plus™ gun, and RAC X SwitchTip that can handle spraying heavier materials are included with every IronMan sprayer.



Flat-Proof Tires

These tires can't be punctured by nails, screws or other sharp debris. They will never go flat, leaving the sprayer stranded on a jobsite.

Large Electrics

Ultra Max II 695

SERIES	PART #
STANDARD	16W892
LO-BOY	16W893
PROCONTRACTOR	16W894

SPECIFICATIONS

MAX TIP SIZE:	0.031-1 Gun 0.023-2 Guns
MAX GPM (LPM):	0.95 (3.6)
MAX PSI (BAR):	3300 (227)
MOTOR HP:	2.0 Brushless DC

INCLUDES

STANDARD SERIES AND LO-BOY UNITS:

- Contractor Gun
- RAC X 517 SwitchTip and Guard
- 1/4 in x 50 ft (6.4 mm x 15 m) BlueMax™ II Airless Hose

PROCONTRACTOR SERIES UNIT:

- Contractor Gun
- RAC X 517 SwitchTip and Guard
- 1/4 in x 50 ft (6.4 mm x 15 m) BlueMax™ II Airless Hose
- AND
- 1/4 in x 50 ft (6.4 mm x 15 m) BlueMax™ II Airless Hose

With a 2.0 hp brushless DC motor, the **Ultra Max II 695** is a rock-solid performer for the professional residential contractor who sprays a wide variety of coatings. It can handle a wide variety of tip sizes and has outstanding proven reliability.

STANDARD
SERIES



Standard model shown.



PRO
Contractor
SERIES

ProContractor model shown.



Lo-Boy easily carries a standard 5-gallon paint bucket.

Ultra Max II 795

With a 2.2 hp brushless DC motor, the **Ultra Max II 795** can handle multiple guns and is ideal for the professional residential remodeling and repainting contractor who sprays a wide variety of coatings.



Standard model shown.



ProContractor model shown.

SERIES	PART #
STANDARD	16W895
PROCONTRACTOR	16W896

SPECIFICATIONS

MAX TIP SIZE:	0.033–1 Gun 0.025–2 Guns 0.019–3 Guns
MAX GPM (LPM):	1.10 (4.1)
MAX PSI (BAR):	3300 (227)
MOTOR HP:	2.2 Brushless DC

INCLUDES

STANDARD SERIES UNIT:

- Contractor Gun
- RAC X 517 SwitchTip and Guard
- 1/4 in x 50 ft (6.4 mm x 15 m) BlueMax™ II Airless Hose

PROCONTRACTOR SERIES UNIT:

- Contractor Gun
- RAC X 517 SwitchTip and Guard
- 1/4 in x 50 ft (6.4 mm x 15 m) BlueMax™ II Airless Hose
- AND**
- 1/4 in x 50 ft (6.4 mm x 15 m) BlueMax™ II Airless Hose



Large Electrics

Ultra Max II 1095

SERIES	PART #
STANDARD	16W899
PROCONTRACTOR	16W900
IRONMAN	16W901

SPECIFICATIONS

MAX TIP SIZE:	0.035-1 Gun 0.027-2 Guns 0.021-3 Guns
MAX GPM (LPM):	1.20 (4.5)
MAX PSI (BAR):	3300 (227)
MOTOR HP:	2.4 Brushless DC

INCLUDES

STANDARD SERIES UNIT:

- Contractor Gun
- RAC X 517 SwitchTip and Guard
- 1/4 in x 50 ft (6.4 mm x 15 m) BlueMax™ II Airless Hose

PROCONTRACTOR SERIES UNIT:

- Contractor Gun
 - RAC X 517 SwitchTip and Guard
 - 1/4 in x 50 ft (6.4 mm x 15 m) BlueMax™ II Airless Hose
- AND**
- 1/4 in x 50 ft (6.4 mm x 15 m) BlueMax™ II Airless Hose

IRONMAN SERIES UNIT:

- Silver Plus Gun
 - RAC X 517 SwitchTip and Guard
 - 1/4 in x 50 ft (6.4 mm x 15 m) BlueMax™ II Airless Hose
- AND**
- 3/8 in x 50 ft (9.5 mm x 15 m) BlueMax™ II Airless Hose

With a 2.4 hp brushless DC motor and the ability to spray up to 1.2 gallons per minute, the **Ultra Max II 1095** is the industry standard for the large residential and commercial contractor who sprays a wide variety of coatings.



Standard model shown.



ProContractor model shown.



IronMan model shown.

Ultra Max II 1595

With a 2.8 hp brushless DC motor and the ability to spray up to 1.35 gallons per minute, the **Ultra Max II 1595** is Graco's largest airless electric sprayer. Because it can handle the widest range of tip sizes, longer hose lengths and heavier coatings with ease, it's perfect for the large residential and industrial painter.



STANDARD
SERIES

Standard model shown.



PRO
Contractor
SERIES

ProContractor model shown.



IRONMAN
SERIES

IronMan model shown.

SERIES	PART #
STANDARD	16W902
STANDARD (CANADA)	16W936
PROCONTRACTOR	16W903
PROCONTRACTOR (CANADA)	16W937
IRONMAN	16W907
IRONMAN (CANADA)	16W938

SPECIFICATIONS

MAX TIP SIZE:	0.039–1 Gun 0.029–2 Guns 0.023–3 Guns
---------------	---

MAX GPM (LPM): 1.35 (5.1)

MAX PSI (BAR): 3300 (227)

MOTOR HP: 2.8 Brushless DC

INCLUDES

STANDARD SERIES UNITS:

- Contractor Gun
- RAC X 517 SwitchTip and Guard
- 1/4 in x 50 ft (6.4 mm x 15 m) BlueMax™ II Airless Hose

PROCONTRACTOR SERIES UNITS:

- Contractor Gun
 - RAC X 517 SwitchTip and Guard
 - 1/4 in x 50 ft (6.4 mm x 15 m) BlueMax™ II Airless Hose
- AND
- 1/4 in x 50 ft (6.4 mm x 15 m) BlueMax™ II Airless Hose

IRONMAN SERIES UNITS:

- Silver Plus Gun
 - RAC X 517 SwitchTip and Guard
 - 1/4 in x 50 ft (6.4 mm x 15 m) BlueMax™ II Airless Hose
- AND
- 3/8 in x 50 ft (9.5 mm x 15 m) BlueMax™ II Airless Hose

Accessories

ELECTRIC AIRLESS SPRAYERS

In addition to the industry's best sprayers, Graco makes the accessories that enable you to work faster and more productively. From rugged guns and tips to hoses and extensions, Graco's accessories let you customize your sprayer for the maximum performance that best suits your work.

FOR SPRAYERS: 390 PC – Ultra Max II 595 PC Pro

DIGITAL DISPLAYS Simple to use and easy to install display featuring pressure display and error code self diagnostics.

287098 Digital Display for Ultra 395 PC

287904 Digital Display for Ultra Max II 490/495/595 PC Pro



HOPPER 1.5 gal (5.7 l) molded hopper attaches to sprayer in place of inlet suction hose. Ideal for spraying small amounts of material. Lid included. Smooth inside cleans up fast

17H171 Hopper Assembly



FILTERS AND INLET STRAINER

246425 Easy Out Filters – Short, Gray, 30 mesh

246384 Easy Out Filters – Short, Black, 60 mesh

246382 Easy Out Filters – Short, Blue, 100 mesh

246383 Easy Out Filters – Short, Red, 200 mesh

246385 Inlet Strainer



REPLACEMENT PUMPS

17C487 ProConnect Replacement Pump – Longest Life

17J552 Express Replacement Pump – Long Life

FOR SPRAYERS: Ultra Max II 695 – 1595

LED DISPLAY Bright easy-to-read LED display shows pressure readout, job/lifetime, gallon counter and self diagnostics.

24V061 LED Display for SmartControl 3.0 fits Ultra Max II 695/795/1095/1595

Fits all SmartControl 3.0 models. Includes WatchDog feature.



SUCTION HOSE KIT Easily installs on any sprayer to provide the convenience of a flexible inlet hose. Leave tube long (fits 30-gallon trash cans and 55-gallon drums) or simply unscrew at middle fitting to shorten (fits 5-gallon buckets).

248317 55 Gallon Suction Hose Kit

FILTERS AND STRAINERS

244071 Easy Out Filters – Long, Gray, 30 mesh

244067 Easy Out Filters – Long, Black, 60 mesh

244068 Easy Out Filters – Long, Blue, 100 mesh

244069 Easy Out Filters – Long, Red, 200 mesh

189920 Inlet Screen – Ultra Max II 695/795/1095/1595

257033 Inlet Screen – IronMan 1095/1595



PUMP ARMOR™/TSL™ Maintaining your pump is essential for long life and reliability. Graco has made pump maintenance simple with our complete line of fluids. Pump Armor is a storage solution which protects your pump from the damaging effects of corrosion during storage. TSL (Throat Seal Liquid) prevents dried paint from accumulating on the pump rod—extending the life of the pump packings.

243103 Pump Armor – 1 qt (1 l)

245133 Pump Armor – 1 gal (3.8 l)

206994 Throat Seal Liquid (TSL) – 8 oz (.24 l)

206995 Throat Seal Liquid (TSL) – 1 qt (1 l)

206996 Throat Seal Liquid (TSL) – 1 gal (3.8 l)



RAC X SWITCHTIP The RAC X SwitchTip is a high-performance spray tip used for residential and commercial applications. With a large selection of tip sizes available we are sure to have one to fit your needs. RAC X provides the best fan pattern life and the highest quality finish. These Graco tips are the most widely used reversible spray tip on the market today!



RAC X – FINE FINISH LOW PRESSURE (Green Handle) Spray With Up to 50% Less Pressure!

- ▶ Sprays at lower pressures with less overspray
- ▶ Pre-orifice design produces a perfect airless finish
- ▶ Up to 2X life
- ▶ Finer atomization and soft edges for easier overlapping
- ▶ Reduces prep and cleanup
- ▶ Includes solvent seal for hot solvents



CONTRACTOR/FTx GUNS Designed by Graco to be the longest-lasting guns on the market, the Contractor and FTx Guns continue to be the number one choice of painting contractors. With features like the FlexSeal design, Easy Out Gun Filter and EasyGlide Swivel, no wonder these are the contractors choice in guns.

- 288420 Contractor Gun (2-finger trigger) with RAC X 517 Tip and Guard
- 288425 Contractor Gun (4-finger trigger) with RAC X 517 Tip and Guard
- 288421 Contractor Gun (2-finger trigger) with RAC[®] 5 517 Tip and Guard
- 288430 FTx Gun (4-finger trigger) with RAC X 515 Tip and Guard
- 288429 FTx Gun (2-finger trigger) with RAC X 515 Tip and Guard
- 288431 FTx Gun (4-finger trigger) with RAC 5 515 Tip and Guard
- 246240 Silver Plus Gun with RAC X 517 Tip and Guard
- 246468 Flex Plus™ Gun with RAC X 517 Tip and Guard
- 287023 3 ft (0.9 m) Pole Gun with Contractor Inline Valve, CleanShot™ Valve, RAC X Tip and Guard
- 287024 6 ft (1.8 m) Pole Gun with Contractor Inline Valve, CleanShot Valve, RAC X Tip and Guard



GUN HOSE KITS – KITS INCLUDE THE FOLLOWING UNLESS OTHERWISE NOTED

Airless Gun, RAC X 517 Tip and Guard, 1/4 in x 50 ft (6.4 mm x 15 m)
BlueMax II 3300 psi (227 bar) Airless Hose and 3 ft (0.9 m) Whip Hose

- 288489 Contractor Gun Hose Kit
- 288496 Contractor Gun Hose Kit with RAC 5
- 288490 Contractor Gun Hose Kit with 3/8 in x 50 ft (9.5 mm x 15 m) BlueMax II 3300 psi (227 bar) Airless Hose
- 288493 FTx Gun Hose Kit with RAC X 515 Tip (Whip Hose excluded)
- 288497 FTx Gun Hose Kit with RAC 5 515 Tip (Whip Hose excluded)
- 287095 Flex Plus Gun Hose Kit
- 287041 Silver Plus Gun Hose Kit
- 287042 Silver Plus Gun Hose Kit with 3/8 in x 50 ft (9.5 mm x 15 m) BlueMax II 3300 psi (227 bar) Airless Hose



BLUEMAX II AIRLESS HOSE To maximize results, choose the high performance BlueMax II Airless Hose. Lighter weight and increased hose flexibility improves usability when spraying under pressure. With superior flexibility and durability, BlueMax II ensures you get the best results from your airless sprayer.

- 238358 3/16 in x 3 ft (4.8 mm x 0.9 m) BlueMax II 3300 psi (227 bar) Airless Whip Hose
- 238959 3/16 in x 4.5 ft (4.8 mm x 1.4 m) BlueMax II 3300 psi (227 bar) Airless Whip Hose
- 240793 1/4 in x 25 ft (6.4 mm x 7.5 m) BlueMax II 3300 psi (227 bar) Airless Hose
- 240794 1/4 in x 50 ft (6.4 mm x 15 m) BlueMax II 3300 psi (227 bar) Airless Hose
- 240797 3/8 in x 50 ft (9.5 mm x 15 m) BlueMax II 3300 psi (227 bar) Airless Hose



JETROLLERS™ Save time and money by spraying and back rolling in one easy step with the **NEW** Graco 3-in-1 JetRoller System. Each kit includes a lightweight detachable roller (uses industry standard roller covers), CleanShot shut-off valve, spray tip and guard.

- 24U170 JetRoller System with 20 in (50 cm) Heavy-Duty Extension and 9 in Handle
- 24U172 JetRoller System with 20 in (50 cm) Heavy-Duty Extension, Contractor Inline Valve and 9 in Handle
- 24W128 JetRoller System with 20 in (50 cm) Heavy-Duty Extension, Contractor Inline Valve and 18 in Handle



Ask your local authorized Graco Distributor for details on our complete line of airless accessories.

SOLUTIONS TO KEEP YOU SPRAYING

**ALWAYS HAVE A SPARE
PUMP ON HAND!**



Endurance[™] Advantage Program

SMALL AND MIDSIZE ELECTRIC SPRAYERS:

- ▶ Receive a **FREE Repack Kit** when you buy a small or midsize electric sprayer!

LARGE ELECTRIC OR GAS SPRAYERS:

- ▶ Purchase an additional Endurance Pump for up to **80% OFF** the list price when you buy a large electric or gas sprayer!
- ▶ **OR choose a FREE Pump Repair Kit!**



WARRANTY SPRAY PROTECTION

We stand behind every piece of equipment we manufacture with the industry's strongest warranty.

Spray with the confidence that you will probably never need to use Graco's warranty, but if you do. . . *we will be there.*

LIFETIME ELECTRIC MOTOR WARRANTY*

If the motor fails from normal use, we'll replace it under warranty for the original owner for the life of the sprayer.

LIFETIME DRIVE TRAIN WARRANTY*

If the drive train fails from normal use, we'll replace it under warranty for the original owner for the life of the sprayer.

30-DAY "JUST ADD PAINT" REPLACEMENT GUARANTEE*

Dissatisfied? Simply return the sprayer to the place you bought it within 30 days. They'll either exchange it for an identical sprayer or you can trade-up to a larger sprayer at an additional cost.



3-YEAR WARRANTY*

Coverage against defects in materials and workmanship on the entire sprayer.

DOWNTIME ELIMINATOR PROGRAM*

Part needed for a warranty repair not in stock at your distributor? Get **FREE** next business day air freight delivery when distributor orders the part by 2 p.m. CT.

CONVENIENT SERVICE

Graco offers more than 5,500 authorized distributor locations in North America and over 700 locations to administer warranty repair.

*NORTH AMERICA ONLY. See your local Graco distributors for country specifics.

NOBODY ELSE BUILDS SPRAYERS LIKE THIS.



Every Graco purchase comes with **A+ Customer Service.**

Questions?
Call (844) 241-9499

SMALL & MIDSIZE ELECTRIC AIRLESS SPRAYER SPECIFICATIONS



		390 PC	Ultra 395 PC	Ultra Max II 490 PC Pro	Ultra Max II 495 PC Pro	Ultra Max II 595 PC Pro
SPECIFICATIONS	Maximum Tip Size	0.021	0.023	0.023	0.025	0.027
	Maximum psi (bar)	3300 (227)	3300 (227)	3300 (227)	3300 (227)	3300 (227)
	Maximum gpm (lpm)	0.47 (1.8)	0.54 (2.0)	0.54 (2.0)	0.60 (2.3)	0.70 (2.6)
	Motor hp	5/8 DC	7/8 TEFC DC	1.0 Brushless DC	1.2 Brushless DC	1.6 Brushless DC
	Weight lb (kg)	30 (14) Stand	42 (19) Stand	34 (15) Stand	34 (15) Stand	72 (33) Hi-Boy
	Gun Support: 1 Gun	0.021	0.023	0.023	0.025	0.027



Small Electrics			
MODEL	Cart Design— Part Number	Stand 17C310 Hi-Boy 17C313	Stand 17C314 Hi-Boy 17C317 Lo-Boy 17C315
INCLUDES	Gun	FTx	Contractor
	Hose	1/4 in x 50 ft (6.4 mm x 15 m) BlueMax II Airless	1/4 in x 50 ft (6.4 mm x 15 m) BlueMax II Airless
	Tip	RAC X 515	RAC X 517
	Filter	60 Mesh Easy Out	60 Mesh Easy Out
ADDITIONAL SERIES FEATURES		—	—
PUMP	Mounting	ProConnect	ProConnect
	Type	Endurance	Endurance
CONTROL & DRIVE	Control	Electronic	SmartControl 1.0
	Motor	DC	TEFC DC
REPLACEMENT PUMPS	Endurance Pump	17C487	17C487
	Express Pump	17J552	17J552
WEAR PARTS	Repair Kit	244194	244194
	Rod	24W617	24W617
	Cylinder	24W619	24W619
	Intake Seat Kit	246429	246429
MANUAL	Operation	334567	334446

Mid-Sized Electrics			
	Stand 17C327 Hi-Boy 17C332 Lo-Boy 17C328	Stand 17C333 Hi-Boy 17C335 Lo-Boy 17C334	Hi-Boy 17C337 Lo-Boy 17C336
	Contractor	Contractor	Contractor
	1/4 in x 50 ft (6.4 mm x 15 m) BlueMax II Airless	1/4 in x 50 ft (6.4 mm x 15 m) BlueMax II Airless	1/4 in x 50 ft (6.4 mm x 15 m) BlueMax II Airless
	RAC X 517	RAC X 517	RAC X 517
	60 Mesh Easy Out	60 Mesh Easy Out	60 Mesh Easy Out
	Digital Display	Digital Display	Digital Display
	Fast Flush	Fast Flush	FastFlush
	ProConnect	ProConnect	ProConnect
	Endurance	Endurance	Endurance
	SmartControl 2.5	SmartControl 2.5	SmartControl 2.5
	MaxPower	MaxPower	MaxPower
	17C487	17C487	17C487
	17J552	17J552	17J552
	244194	244194	244194
	24W617	24W617	24W617
	24W619	24W619	24W619
	246429	246429	246429
	334530	334530	334530

LARGE ELECTRIC AIRLESS SPRAYER SPECIFICATIONS

		Ultra Max II 695		Ultra Max II 795	
SPECIFICATIONS	Maximum Tip Size	0.031		0.033	
	Maximum psi (bar)	3300 (227)		3300 (227)	
	Maximum gpm (lpm)	0.95 (3.6)		1.10 (4.1)	
	MaxPower Motor hp	2.0 Brushless DC		2.2 Brushless DC	
	Control	SmartControl 3.0		SmartControl 3.0	
	Weight lb (kg)	93 (42) Standard Hi-Boy		98 (44) Standard	
	Gun Support:				
1 Gun	0.031		0.033		
2 Guns	0.023		0.025		
3 Guns	—		0.019		
					
SERIES TYPE		STANDARD	PROCONTRACTOR	STANDARD	PROCONTRACTOR
MODEL	Cart Design— Part Number	Hi-Boy—16W892 Lo-Boy—16W893	16W894	16W895	16W896
INCLUDES	Gun	Contractor	Contractor	Contractor	Contractor
	Hose	1/4 in x 50 ft (6.4 mm x 15 m) BlueMax II Airless	1/4 in x 50 ft (6.4 mm x 15 m) AND 1/4 in x 50 ft (6.4 mm x 15 m) BlueMax II Airless	1/4 in x 50 ft (6.4 mm x 15 m) BlueMax II Airless	1/4 in x 50 ft (6.4 mm x 15 m) AND 1/4 in x 50 ft (6.4 mm x 15 m) BlueMax II Airless
	Tip	RAC X 517	RAC X 517	RAC X 517	RAC X 517
	Filter	60 Mesh Easy Out	60 Mesh Easy Out	60 Mesh Easy Out	60 Mesh Easy Out
PUMP	Type	QuikChange System	ProConnect System	QuikChange System	ProConnect System
	Rod	Chromex	Chromex	Chromex	Chromex
	Sleeve	Hardened SST	Hardened SST	Hardened SST	Hardened SST
ADDITIONAL SERIES FEATURES		—	QuikReel	—	QuikReel
		—	FastFlush	—	FastFlush
		—	LED Display	—	LED Display
		—	WatchDog	—	WatchDog
		—	On-Board Toolbox	—	On-Board Toolbox
WEAR PARTS	Replacement Pump	16Y598	16X414	16Y598	16X414
	Repair Kit	248212	248212	248212	248212
	Rod	248206	16X434	248206	16X434
	Sleeve	248209	248209	248209	248209
	Intake Seat Kit	239922	239922	239922	239922
MANUAL	Operation	332916	332916	332916	332916
	Parts	332918	332918	332918	332918
	Pump	333028	332922	333028	332922

Ultra Max II 1095

0.035

3300 (227)

1.20 (4.5)

2.4 Brushless DC

SmartControl 3.0

120 (55) Standard

0.035

0.027

0.021



Ultra Max II 1595

0.039

3300 (227)

1.35 (5.1)

2.8 Brushless DC

SmartControl 3.0

125 (56) Standard

0.039

0.029

0.023



STANDARD

PROCONTRACTOR

IRONMAN

16W899

16W900

16W901

Contractor

Contractor

Silver Plus

1/4 in x 50 ft
(6.4 mm x 15 m)
BlueMax II Airless1/4 in x 50 ft (6.4 mm x 15 m)
AND
1/4 in x 50 ft (6.4 mm x 15 m)
BlueMax II Airless1/4 in x 50 ft (6.4 mm x 15 m)
AND
3/8 in x 50 ft (9.5 mm x 15 m)
BlueMax II Airless

RAC X 517

RAC X 517

RAC X 517,
RAC X Wide RAC 1231

60 Mesh Easy Out

60 Mesh Easy Out

60 Mesh Easy Out

QuikChange System

ProConnect System

ProConnect System

Chromex

Chromex

MaxLife

Hardened SST

Hardened SST

MaxLife

–

QuikReel

Roll Cage Frame

–

FastFlush

FastFlush

–

LED Display

LED Display

–

WatchDog

WatchDog

–

On-Board Toolbox

Flat-Proof Tires

16Y706

16X419

16X420

248213

248213

17K162/17K475*

248207

16X435

16X436

248210

248210

257031

244199

244199

244199

332916

332916

332916

332918

332918

332918

333028

332922

332922

STANDARD

PROCONTRACTOR

IRONMAN

16W902
(Canada) 16W93616W903
(Canada) 16W93716W907
(Canada) 16W938

Contractor

Contractor

Silver Plus

1/4 in x 50 ft
(6.4 mm x 15 m)
BlueMax II Airless1/4 in x 50 ft (6.4 mm x 15 m)
AND
1/4 in x 50 ft (6.4 mm x 15 m)
BlueMax II Airless1/4 in x 50 ft (6.4 mm x 15 m)
AND
3/8 in x 50 ft (9.5 mm x 15 m)
BlueMax II Airless

RAC X 517

RAC X 517

RAC X 517,
RAC X Wide RAC 1231

60 Mesh Easy Out

60 Mesh Easy Out

60 Mesh Easy Out

QuikChange System

ProConnect System

ProConnect System

Chromex

Chromex

MaxLife

Hardened SST

Hardened SST

MaxLife

–

QuikReel

Roll Cage Frame

–

FastFlush

FastFlush

–

LED Display

LED Display

–

WatchDog

WatchDog

–

On-Board Toolbox

Flat-Proof Tires

16Y706

16X419

16X420

248213

248213

17K162/17K475*

248207

16X435

16X436

248210

248210

257031

244199

244199

244199

332916

332916

332916

332918

332918

332918

333028

332922

332922

*Kit includes ceramic inlet and outlet check balls.



ABOUT GRACO

PROVEN QUALITY. LEADING TECHNOLOGY.

Founded in 1926, Graco is a world leader in fluid handling systems and components. Graco products move, measure, control, dispense and apply a wide range of fluids and viscous materials used in vehicle lubrication, commercial and industrial settings.

The company's success is based on its unwavering commitment to technical excellence, world-class manufacturing and unparalleled customer service. Working closely with qualified distributors, Graco offers systems, products and technology that set the quality standard in a wide range of fluid handling solutions. Graco provides equipment for spray finishing, protective coating, paint circulation, lubrication, and dispensing sealants and adhesives, along with power application equipment for the contractor industry. Graco's ongoing investment in fluid management and control will continue to provide innovative solutions to a diverse global market.

GRACO LOCATIONS

MAILING ADDRESS

P.O. Box 1441
Minneapolis, MN 55440-1441
Tel: 612-623-6000
Fax: 612-623-6777

AMERICAS

MINNESOTA

Worldwide Headquarters
Graco Inc.
88-11th Avenue N.E.
Minneapolis, MN 55413

EUROPE

BELGIUM

European Headquarters
Graco N.V.
Industrieterrein-Oude Bunders
Slakweidestraat 31
3630 Maasmechelen,
Belgium
Tel: 32 89 770 700
Fax: 32 89 770 777

ASIA PACIFIC

AUSTRALIA

Graco Australia Pty Ltd.
Suite 17, 2 Enterprise Drive
Bundoora, Victoria 3083
Australia
Tel: 61 3 9468 8500
Fax: 61 3 9468 8599

CHINA

Graco Hong Kong Ltd.
Shanghai Representative Office
Building 7
1029 Zhongshan Road South
Huangpu District
Shanghai 200011
The People's Republic of China
Tel: 86 21 649 50088
Fax: 86 21 649 50077

INDIA

Graco Hong Kong Ltd.
India Liaison Office
Room 443, Augusta Point
Regus Business Centre 53
Golf Course Road
Gurgaon, Haryana
India 122001
Tel: 91 124 435 4208
Fax: 91 124 435 4001

JAPAN

Graco K.K.
1-27-12 Hayabuchi
Tsuzuki-ku
Yokohama City, Japan 2240025
Tel: 81 45 593 7300
Fax: 81 45 593 7301

KOREA

Graco Korea Inc.
Shinhan Bank Building
4th Floor #1599
Gwanyang-Dong, Dongan-Ku,
Anyang-si, Korea 431-060
Tel: 82 31 476 9400
Fax: 82 31 476 9801

SALES/ DISTRIBUTION/ SERVICE

Call today for product information or to request a demonstration.

800-690-2894 or visit us at www.graco.com.

Graco Inc. is registered to I.S. EN ISO 9001

North America
Customer Service
800-690-2894
Fax 800-334-6955