



# Model 43PG Airless Spray Gun

MODEL: 102-348

(For use with W. R. Grace PROCOR material only)

## DESCRIPTION

The Binks Model 43PG is a high pressure internal mix gun designed to apply W.R. Grace PROCOR (2) component waterproofing material.

The rugged forged aluminum gun handle is anodized for corrosion resistance and the trigger's finger geometry affords comfortable trigger pull and operation. The gun body has a "trigger lock-on button" for spraying long periods of time.

A lock is located behind the trigger to prevent material from dispensing when shut down.

The stainless steel head is designed with cross-drilled ports for ease of maintenance.

## MATERIAL FLOW CHECK

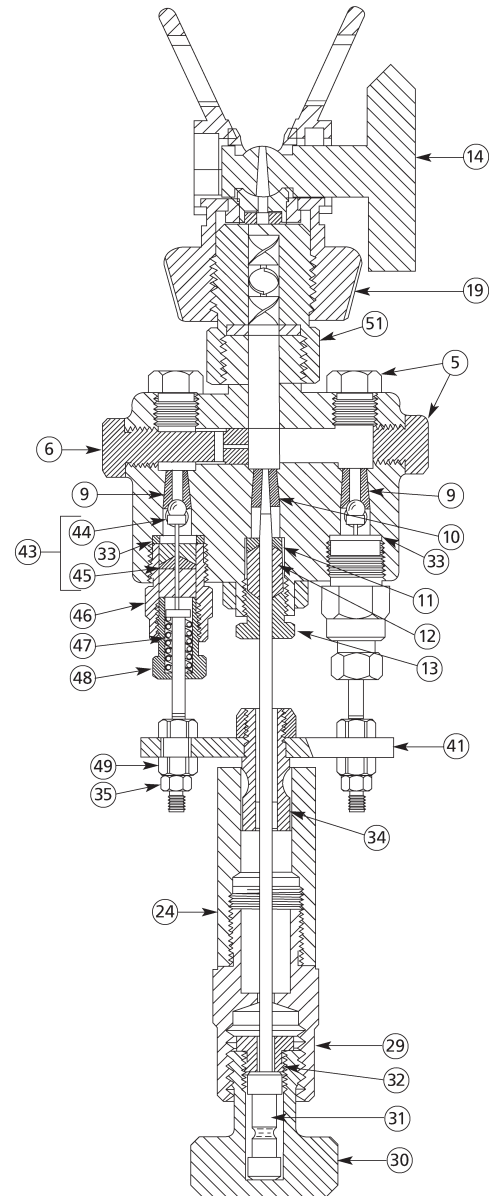
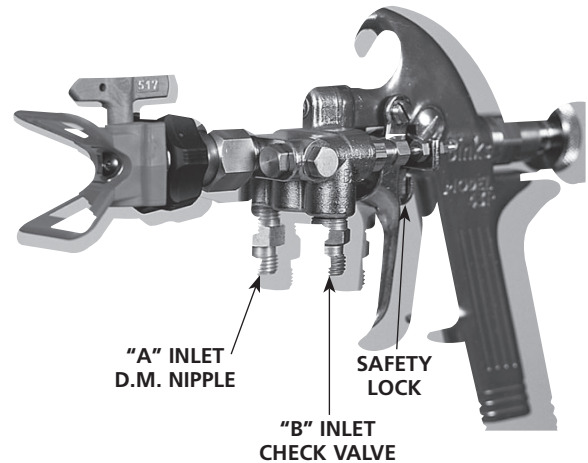
Remove items 5 from front of gun head. Remove item 6 from side of gun head. Replace item 6 with one item 5. Aim gun into suitable waste container. Operate formulator and open gun needles until both fluids flow from the front of gun head. Because of 2.5 to 1 ratio "A" side flow will be greater than "B" side.

## CALIBRATION

To check for correct ratio take two graduated containers and fill them simultaneously. Correct ratio for PROCOR material is 2.5 to 1 by volume.

## NEEDLE VALVE ASSEMBLY, (TWO) ITEMS 50.

1. If fluid leaks through gland (48), tighten only enough to stop leak.
2. If leak cannot be stopped:
  - a. Shut off pump and relieve pressure within entire system.
  - b. Remove screw (23), stud (25), and trigger (42).
  - c. Use Allen wrench and remove screw (7). Separate head (8) and body (24).
  - d. Lift off safety lock yoke assembly (41). Use crescent or open-end wrench and remove needle assembly (50).
  - e. Turn out gland (48) until no threads are engaged, thus relieving spring tension on packing (45).
  - f. Remove each of the two retainers (46).
  - g. With knife edge, or sharp tool, pick up split in packing (45) and remove.
  - h. Slip new packing (45) (factory pre-split) over needle wire in needle and packing assembly (43), again exercising care not to damage wire.
  - i. Tighten gland (48) into retainer (46).
  - j. Wrap retainer (46) threads with PTFE tape and insert into head (8). Reinstall needle assembly (50) by reversing above procedures (a) to (d) in step 2.
3. The seat (9) is designed for long life and is not usually removed for normal maintenance. If it is damaged and must be removed, repeat procedures (a) to (d), step 2. then:
  - a. Remove plug (5).
  - b. Insert 3/16" diameter brass rod, or drift pin, through plug (5) hole and knock out seat (9).
  - c. To replace, insert new seat (9) in the opposite direction from which it was removed. Press and tap into place.



Replaces  
Part Sheet  
77-2765R

Part  
Sheet  
77-2765R-1

In this part sheet, the words **WARNING**, **CAUTION** and **NOTE** are used to emphasize important safety information as follows:

 <b>WARNING</b>	 <b>CAUTION</b>	<b>NOTE</b>
Hazards or unsafe practices which could result in severe personal injury, death or substantial property damage.	Hazards or unsafe practices which could result in minor personal injury, product or property damage.	Important installation, operation or maintenance information.

## **WARNING**

Read the following warnings before using this equipment.



### **READ THE MANUAL**

Before operating finishing equipment, read and understand all safety, operation and maintenance information provided in the operation manual.



### **WEAR SAFETY GLASSES**

Failure to wear safety glasses with side shields could result in serious eye injury or blindness.



### **DE-ENERGIZE, DEPRESSURIZE, DISCONNECT AND LOCK OUT ALL POWER SOURCES DURING MAINTENANCE**

Failure to De-energize, disconnect and lock out all power supplies before performing equipment maintenance could cause serious injury or death.



### **OPERATOR TRAINING**

All personnel must be trained before operating finishing equipment.



### **EQUIPMENT MISUSE HAZARD**

Equipment misuse can cause the equipment to rupture, malfunction, or start unexpectedly and result in serious injury.



### **KEEP EQUIPMENT GUARDS IN PLACE**

Do not operate the equipment if the safety devices have been removed.



### **HIGH PRESSURE CONSIDERATION**

High pressure can cause serious injury. Relieve all pressure before servicing. Spray from the spray gun, hose leaks, or ruptured components can inject fluid into your body and cause extremely serious injury.



### **GET IMMEDIATE MEDICAL ATTENTION**

To prevent contact with the fluid, please note the following:

- Never point the gun/valve at anyone or any part of the body.
- Never put hand or fingers over the spray tip.
- Never attempt to stop or deflect fluid leaks with your hand, body, glove or rag.
- Always have the tip guard on the spray gun before spraying.
- Always ensure that the gun trigger safety operates before spraying.
- Always lock the gun trigger safety when you stop spraying.



### **PRESSURE RELIEF PROCEDURE**

Always follow the pressure relief procedure in the equipment instruction manual.



### **MEDICAL ALERT**

Any injury caused by high pressure liquid can be serious. If you are injured or even suspect an injury:

- Go to an emergency room immediately.
- Tell the doctor you suspect an injection injury.
- Show the doctor this medical information or the medical alert card provided with your airless spray equipment.
- Tell the doctor what kind of fluid you were spraying or dispensing.
- Refer to the Material Safety Data Sheet for specific information.



### **TOXIC FLUID & FUMES**

Hazardous fluid or toxic fumes can cause serious injury or death if splashed in the eyes or on the skin, inhaled, injected or swallowed. **LEARN and KNOW** the specific hazards or the fluids you are using.



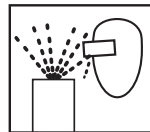
### **WEAR RESPIRATOR**

Toxic fumes can cause serious injury or death if inhaled. Wear a respirator as recommended by the fluid and solvent manufacturer's Material Safety Data Sheet.



### **ELECTRIC SHOCK / GROUNDING**

Improper grounding or sparks can cause a hazardous condition and result in fire, explosion or electric shock and other serious injury.



### **PROJECTILE HAZARD**

You may be injured by venting liquids or gases that are released under pressure, or flying debris.



### **FIRE AND EXPLOSION HAZARD**

Improper equipment grounding, poor ventilation, open flame or sparks can cause hazardous conditions and result in fire or explosion and serious injury.



### **STATIC CHARGE**

Fluid may develop a static charge that must be dissipated through proper grounding of the equipment, objects to be sprayed and all other electrically conductive objects in the dispensing area. Improper grounding or sparks can cause a hazardous condition and result in fire, explosion or electric shock and other serious injury.

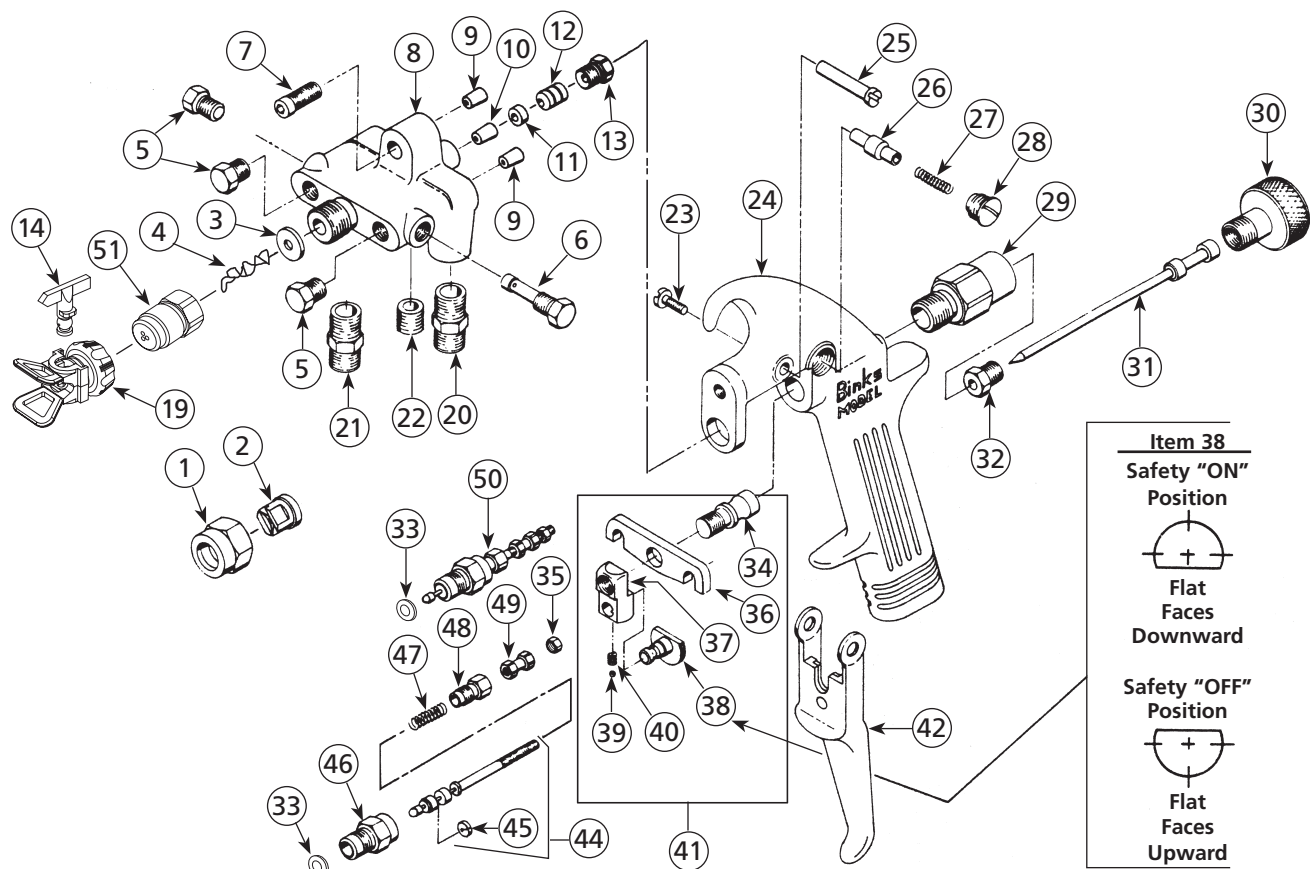


### **PROP 65 WARNING**

**WARNING:** This product contains chemicals known to the State of California to cause cancer and birth defects or other reproductive harm.

**IT IS THE RESPONSIBILITY OF THE EMPLOYER TO PROVIDE THIS INFORMATION TO THE OPERATOR OF THE EQUIPMENT.**

**FOR FURTHER SAFETY INFORMATION REGARDING BINKS AND DEVILBISS EQUIPMENT,  
SEE THE GENERAL EQUIPMENT SAFETY BOOKLET (77-5300).**



## PARTS LIST

(When ordering, please specify Part No.)

ITEM NO.	PART NO.	DESCRIPTION	QTY.	ITEM NO.	PART NO.	DESCRIPTION	QTY.
1	102-3327	NUT .....	1	27	54-1637	SPRING.....	1
2	9-4340	NOZZLE TIP .....	1	28	54-1635	SCREW.....	1
3	54-1439■	GASKET .....	1	29	102-1705	HOUSING.....	1
4	107-1355■	ELEMENT.....	1	30	102-1703	KNOB.....	1
5	102-1716■	PLUG.....	5	31	102-1719	STEM.....	1
6	102-1720■	ORIFICE .035" Diameter.....	1	32	102-1704	BUSHING.....	1
7	20-2195	SCREW 1/4-20 x 3/4" Long .....	1	33	102-3335■	GASKET .....	2
8	102-1761	HEAD.....	1	34	102-1749	PLUNGER.....	1
9	102-1765■	SEAT.....	2	35	52-487■	NUT .....	2
10	102-1708	SEAT.....	1	36	102-2066	YOKE.....	1
11	102-1717	FOLLOWER .....	1	37	102-2067	BLOCK.....	1
12	2-28	PACKING .....	1	38	102-2069	STOP .....	1
13	54-1969	NUT .....	1	39	20-3553	BALL .....	1
14	454-551	TIP .....	1	40	84-353	SPRING.....	1
15	20-1576	ALLEN WRENCH (Not Shown) ....	1	41	102-2065	SAFETY LOCK YOKE ASSEMBLY...	1
17	OMX-88	BRUSH (Not Shown) .....	1	42	102-1709	TRIGGER .....	1
18	82-469	BRUSH (Not Shown) .....	1	44	102-1757■	VALVE ASSEMBLY .....	2
19	454-5	TIP HOLDER.....	1	45	102-1756	PACKING.....	2
20	102-1780■	CHECK VALVE ASSEMBLY.....	1	46	102-1725	RETAINER .....	2
21	237-375	D. M. NIPPLE.....	1	47	102-1730■	SPRING.....	2
22	20-3111	PLUG.....	1	48	102-1726	GLAND.....	2
23	82-126	SCREW.....	1	49	54-1663■	NUT .....	2
24	102-1702	BODY.....	1	50	102-1759	NEEDLE ASSEMBLY.....	2
25	54-1020	STUD .....	1	51	102-3785	TWIST TIP ADAPTER.....	1
26	54-1641	LOCK .....	1	52	102-1869	ORIFICE (Not Shown) .....	1

■ Recommended as replacement items, also available in 106-1239 Spare Part Kit.

### 106-1239 SPARE PARTS KIT INCLUDES

ITEM	3	4	5	6	9	20	33	35	44	47	49
QTY.	2	4	2	1	2	1	2	2	2	2	2

## WARRANTY

This product is covered by Binks' 1 Year Limited Warranty.

---

**Binks Sales and Service: [www.binks.com](http://www.binks.com)**

---



U.S.A./Canada Customer Service  
195 Internationale Blvd.  
Glendale Heights, IL 60139  
630-237-5000

Toll Free Customer Service  
and Technical Support  
800-992-4657  
  
Toll Free Fax  
888-246-5732

<p><b>77-2765R-1 Revisions:</b> (P1) PTFE reference update; (P2) Added Prop 65 warning; (P4) Updated contact information.</p>
---